

# UNIVERSITY ENTREPRENEURSHIP 2020

---



ILLINOIS  
INNOVATION  
INDEX





**We measure, connect and advocate  
for the state's innovation economy.**



# Our History

1871

**Member-driven  
Non-Profit, Based at 1871**

Founded in partnership with the State of Illinois as a technology adviser and economic development partner.



**30+**  
years old

**A Shared Voice**

Providing a shared voice for the state's R&D community.

Overview





# ISTC's Pillars

A red-tinted background featuring a candlestick chart with a horizontal line intersecting it.

**DATA**

A blue-tinted background featuring a large, ornate domed building, likely a state capitol.

**ADVOCACY**

A green-tinted background featuring a group of students, with one student in the foreground looking intently at a project.

**EDUCATION**





## State

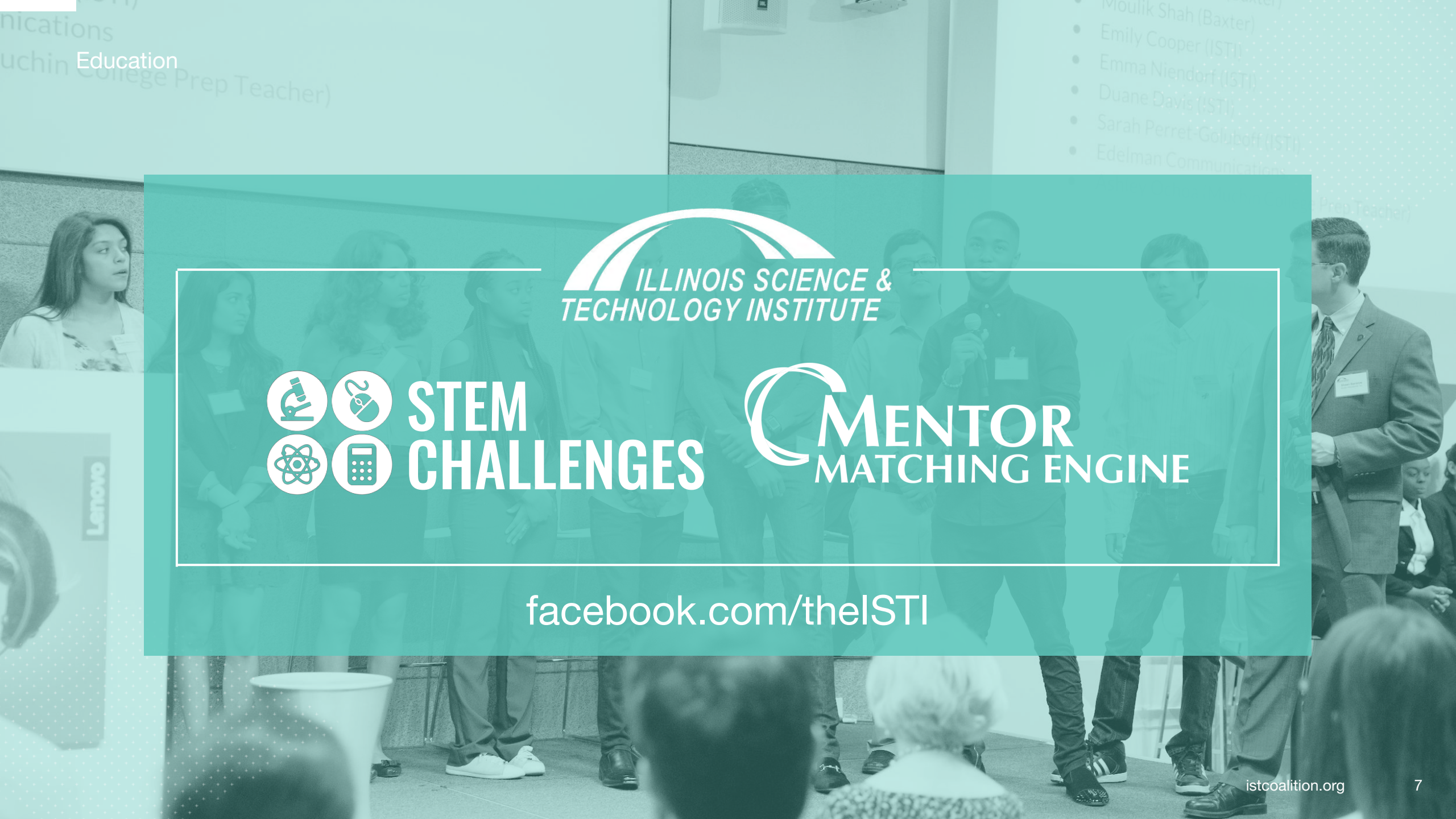
- Illinois University-Industry Innovation Vouchers
- Illinois Innovation Day



## Federal

- Relief and recovery platform:
  - ◆ Expand emergency technical assistance
  - ◆ Support broader base of biosciences-related innovation
  - ◆ Authorize & fund an intermediary small business finance program
  - ◆ Implement a new program to transform federal research and development into new products and jobs

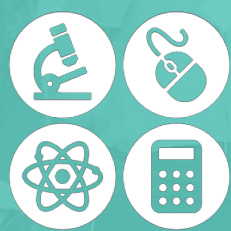




Education  
uchin College Prep Teacher)

- Moulik Shah (axter)
- Emily Cooper (ISTI)
- Emma Niendorf (ISTI)
- Duane Davis (ISTI)
- Sarah Perret-Goluboff (ISTI)
- Edelman Communications

  
ILLINOIS SCIENCE &  
TECHNOLOGY INSTITUTE



STEM  
CHALLENGES

 MENTOR  
MATCHING ENGINE

[facebook.com/theISTI](https://facebook.com/theISTI)



# ILLINOIS INNOVATION INDEX

## University Entrepreneurship



## Research & Development



## Talent Supply & Demand







# ILLINOIS INNOVATION INDEX


UNIVERSITY ENTREPRENEURSHIP 2020

Startup Creation Reaches  
Record Heights

Daniel Solomon, MD, PhD  
Learning Resources

Rosalind Franklin University of Medicine and Science

Startup Creation


 Startup Creation by Period


 Startup Industries


 Job Creation

Funding


 Startup Funding

 Funding by Industries


 Direct University Funding

 I-Corps & SBIR/STTR

Founders

 Female and Foreign-born Founders

Tech Transfer

 Tech Transfer Metrics

Entrepreneurship in Action

 University Entrepreneurs Take on COVID-19



ISTC Entrepreneurship Survey



Supplemental Data



## Startup Creation

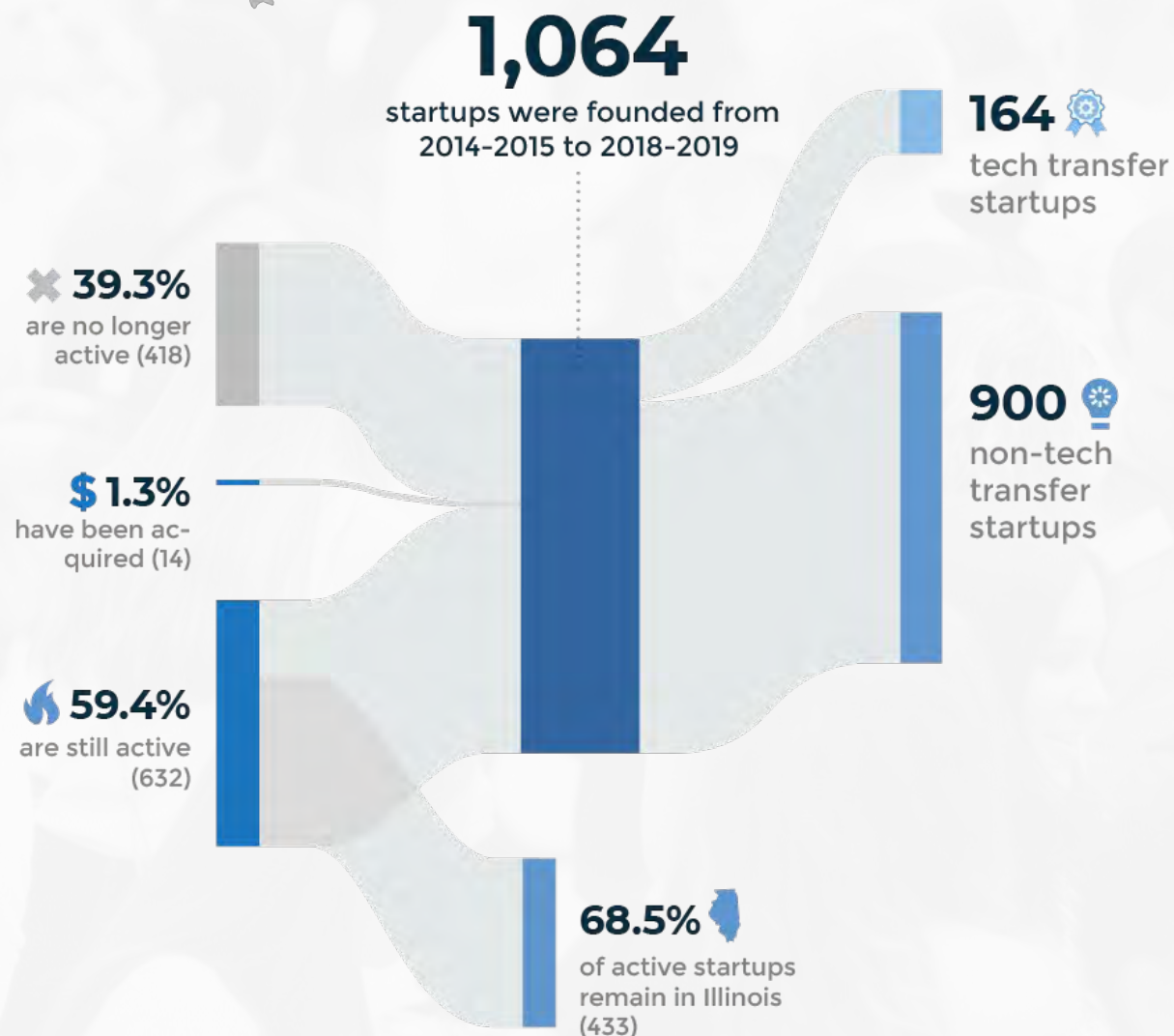
**1,064 startups** were launched on campus across the state from 2015-2019.

**More than 60%** of startups remain active or have been acquired

**More than two-thirds** of active startups remain in Illinois



## University-Supported Startups





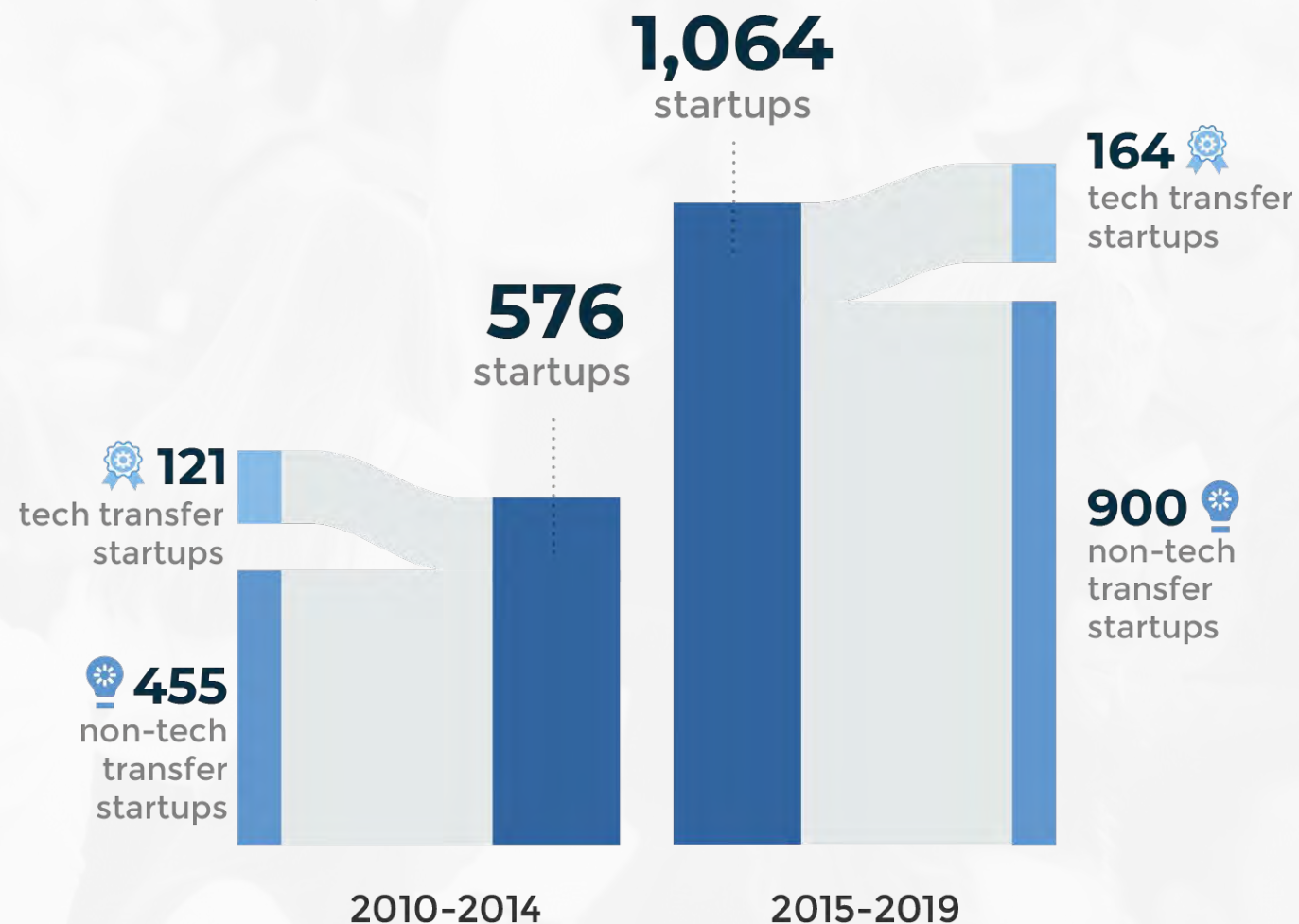
## Startup Creation

**1,064 startups** are nearly twice the amount produced during the previous five-year period.

**Growth in non-tech transfer startups**, which have nearly doubled



### Startup Creation by Period 2010-2019

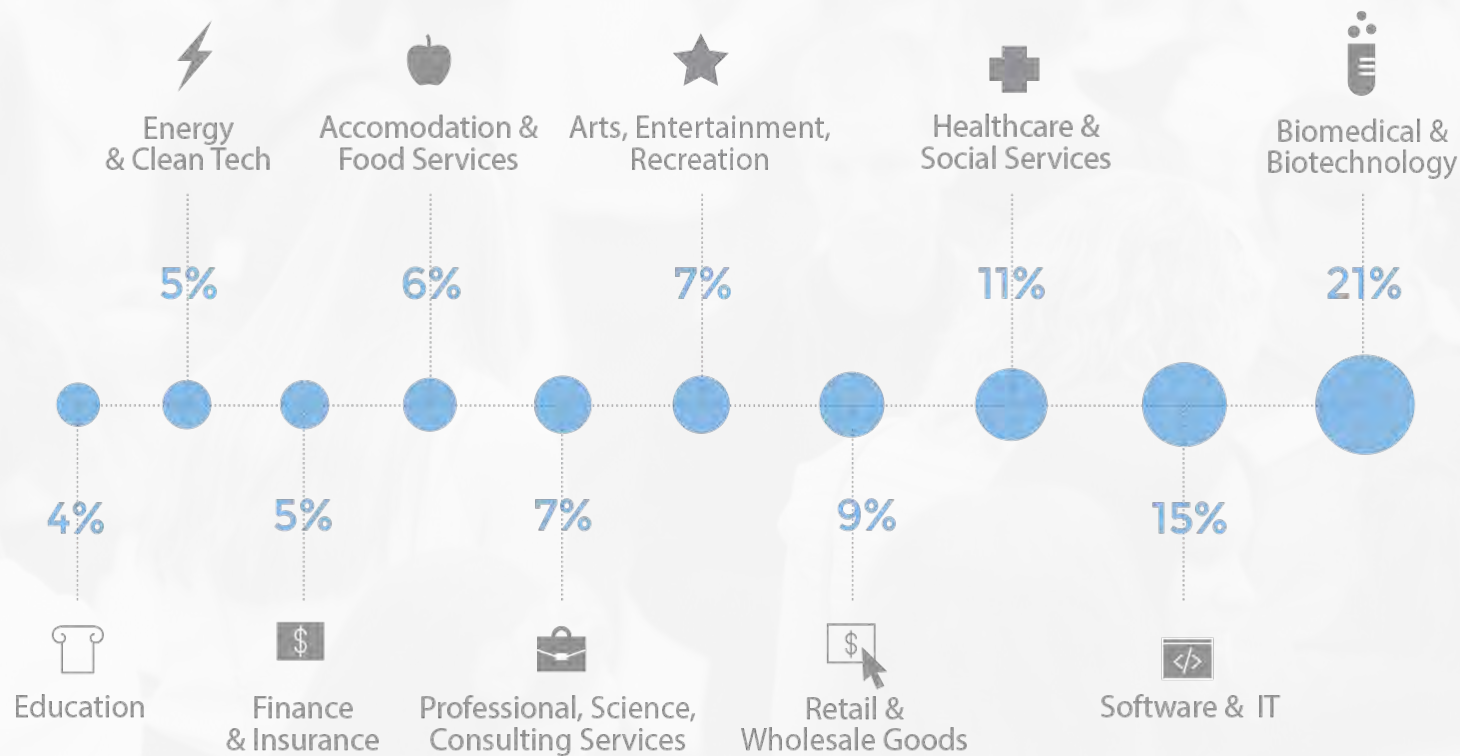


## Startups by Industry

**Biotech** leads startup production by industry

**Software and IT** second most common industry

**Health-related** (biotech + healthcare) makes up nearly one-third of all startups





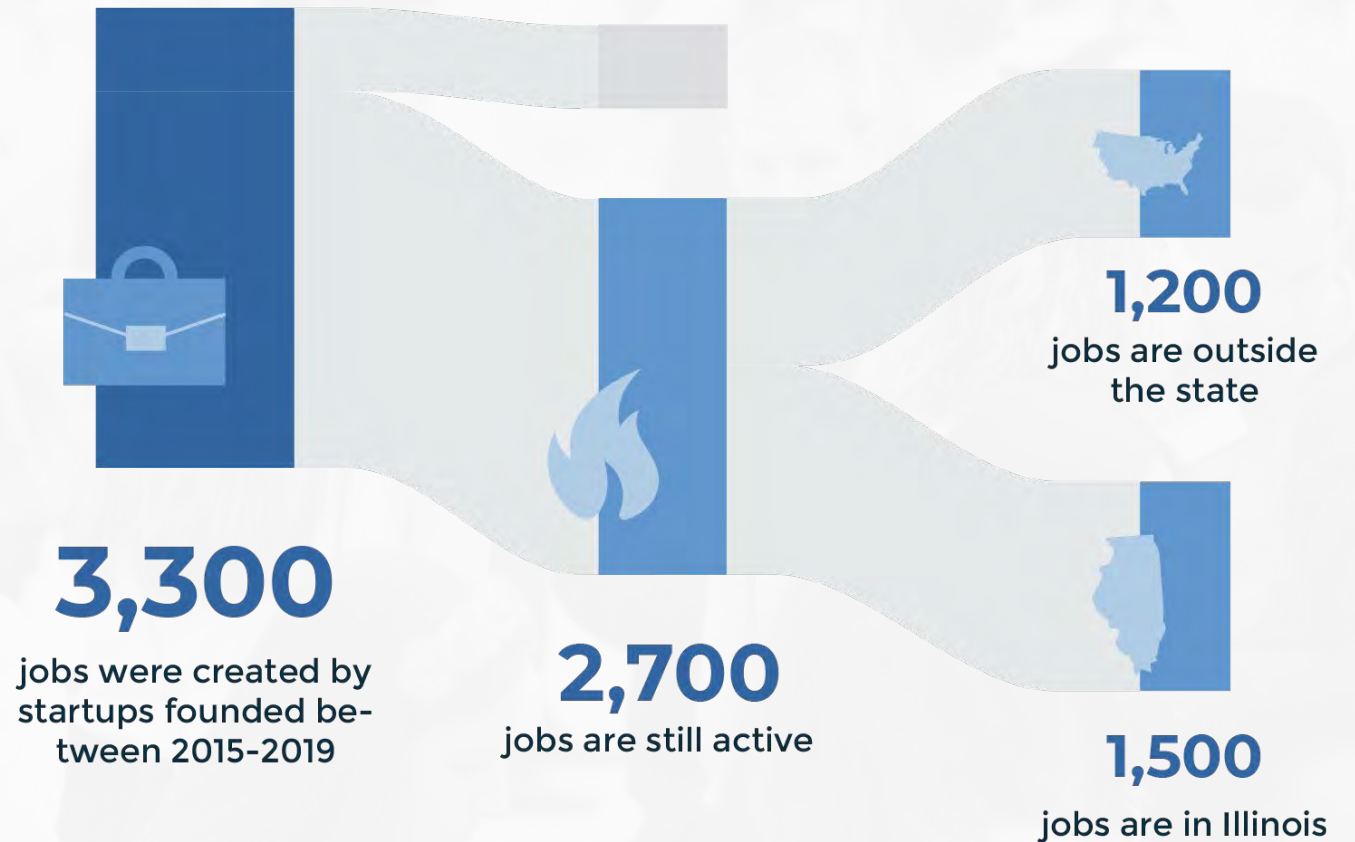
## Job Creation

Startups created around **3,300 jobs** over the past five years

Of these jobs, **2,700 remain active**, and **1,500 are in Illinois**.

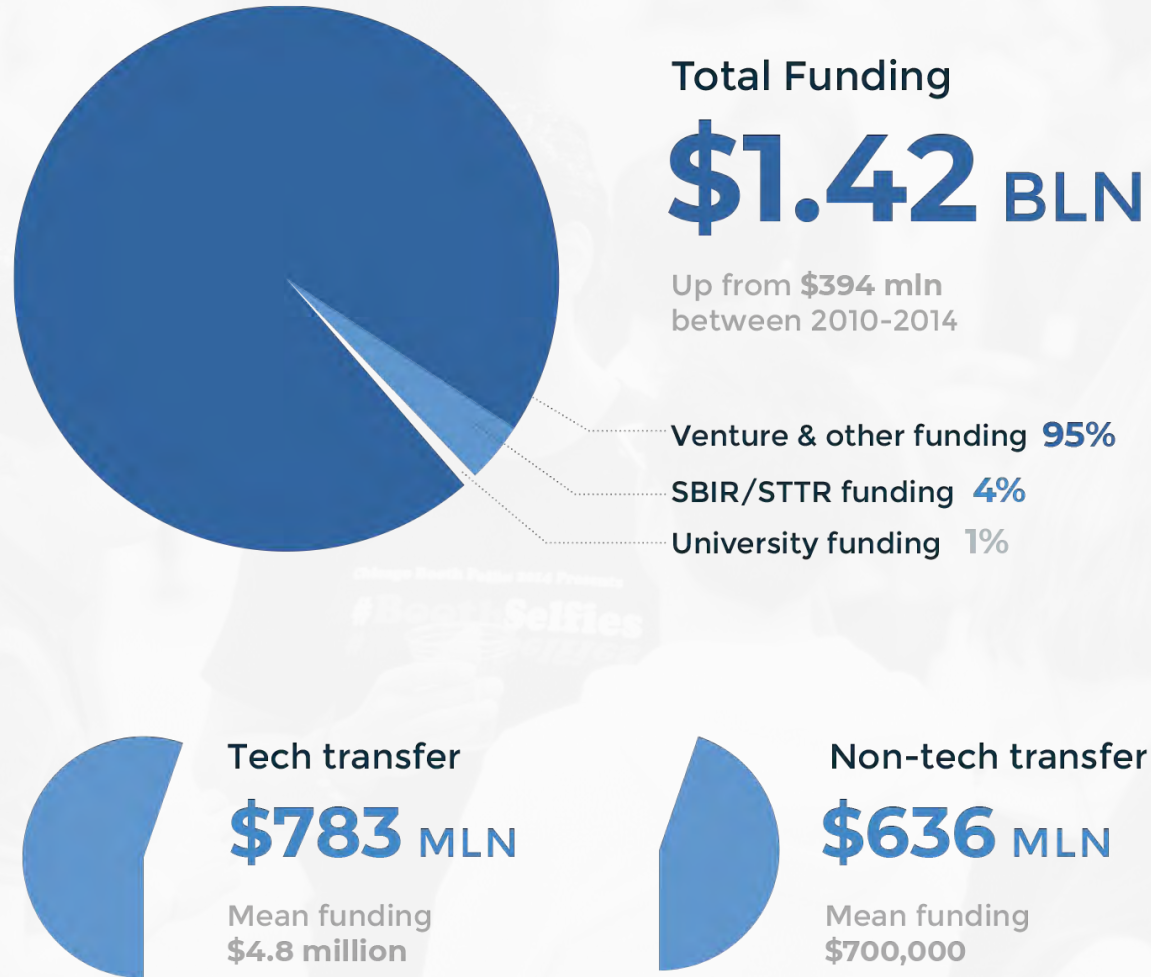


### Job Creation 2015-2019





## Startup Funding 2015-2019



## Startup Funding

**40 percent** of startups have raised funding, **totaling \$1.42 billion**

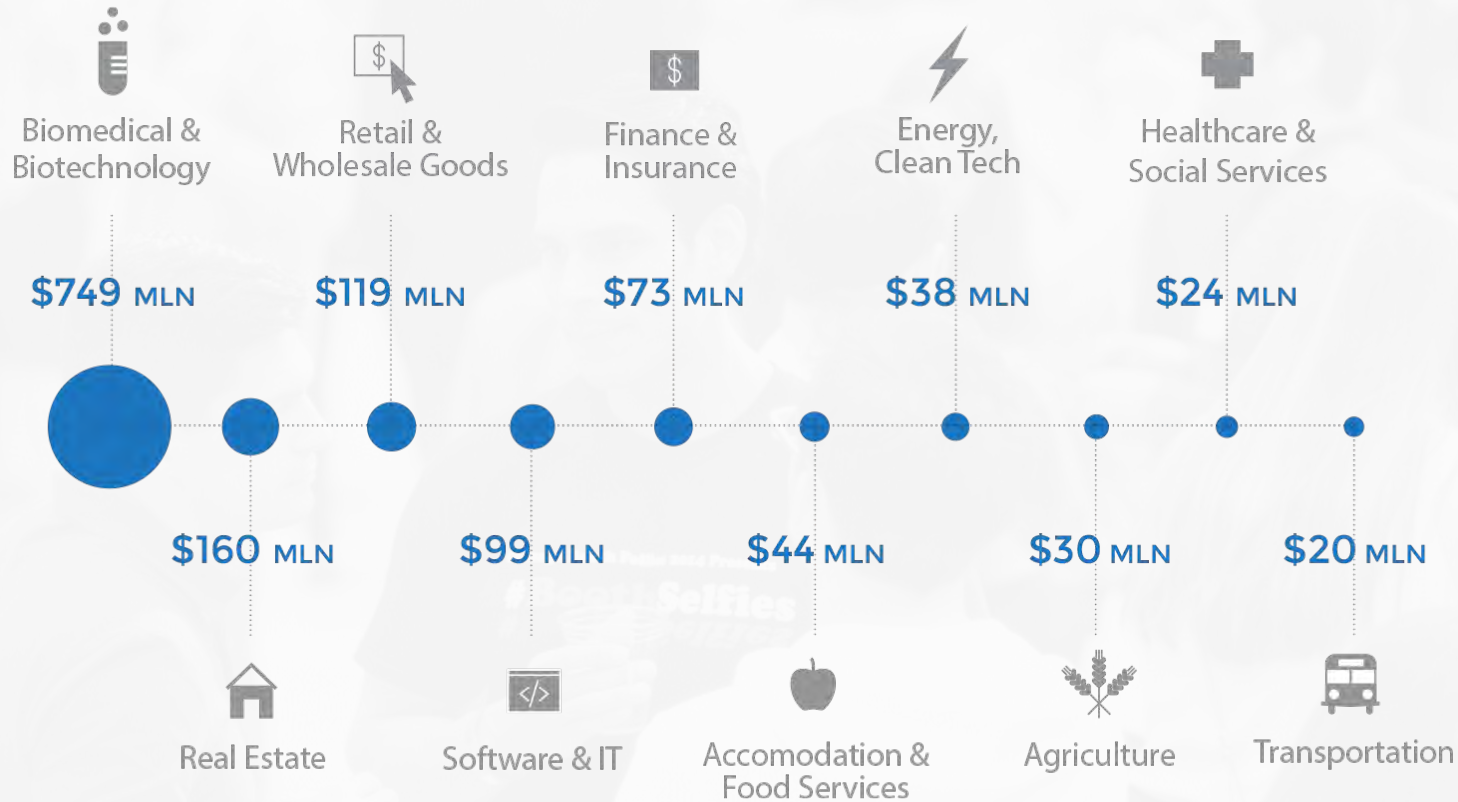
**3.5X more** than during the previous five-year period

**More than half** of this funding goes to tech transfer startups





## Funding by Industry 2015-2019



## Funding by Industry

**Biotech** companies lead funding

Funding for **biotech outpaces all other industries combined** (\$749m vs \$646m)

Real Estate, Retail, and Software & IT each **near or above \$100m**



## Direct University Funding 2015-2019



# 14:1

Ratio of follow-on  
funding



## Direct University Funding

University funding from **pitch & startup competitions, startup funds**

Nearly one-quarter of startups received direct funding, **totaling \$14.1 million.**

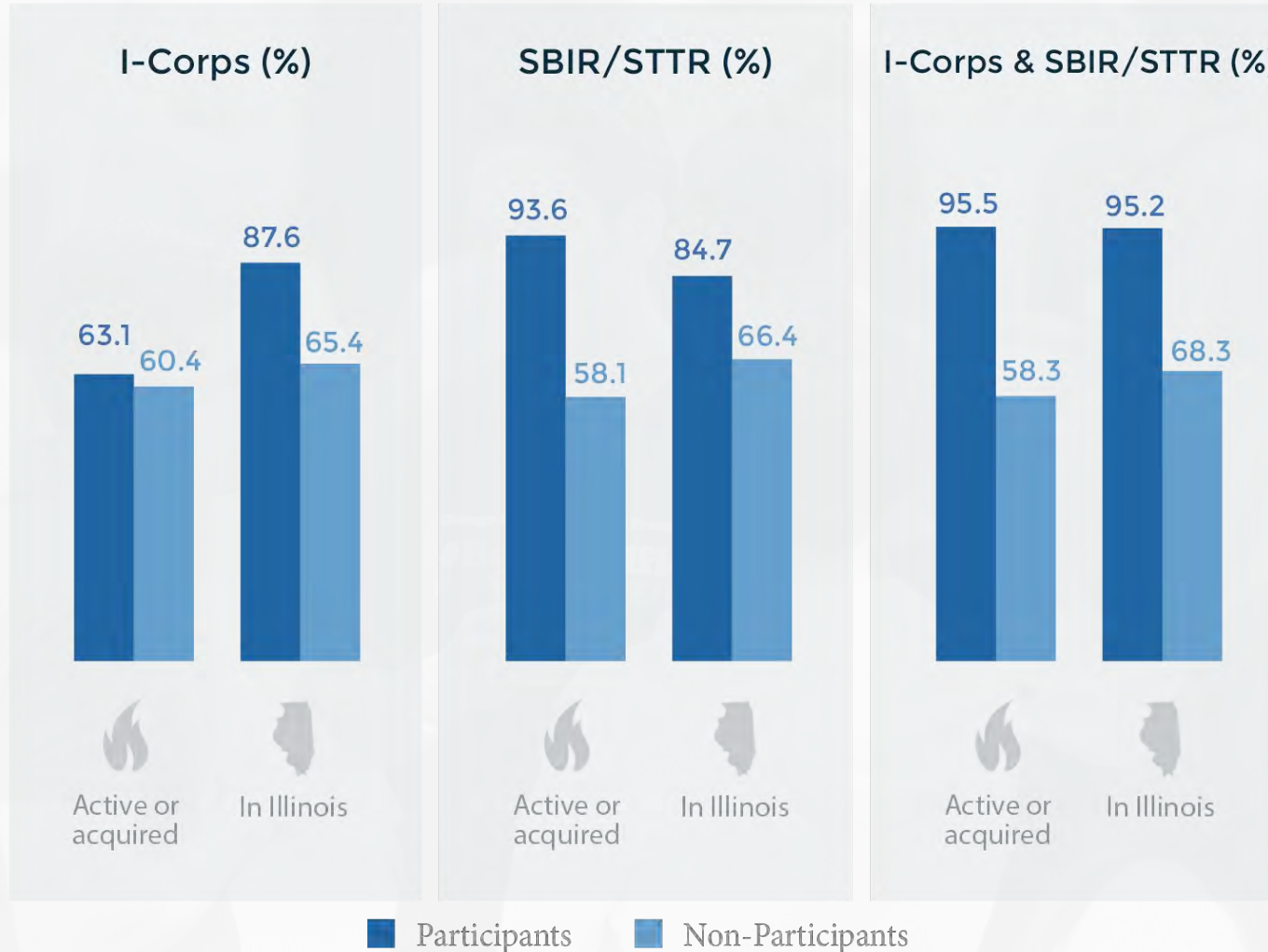
Startups receiving direct funding have gone on to raise **\$204 million**, a **14:1 ratio of follow-on funding.**





## I-Corps & SBIR/STTR 2015-2019

2020 University Entrepreneurship Index



## Funding by Industry

**141 startups** participated in NSF I-Corps

**78 startups** received SBIR/STTR awards, totaling \$52.7 million

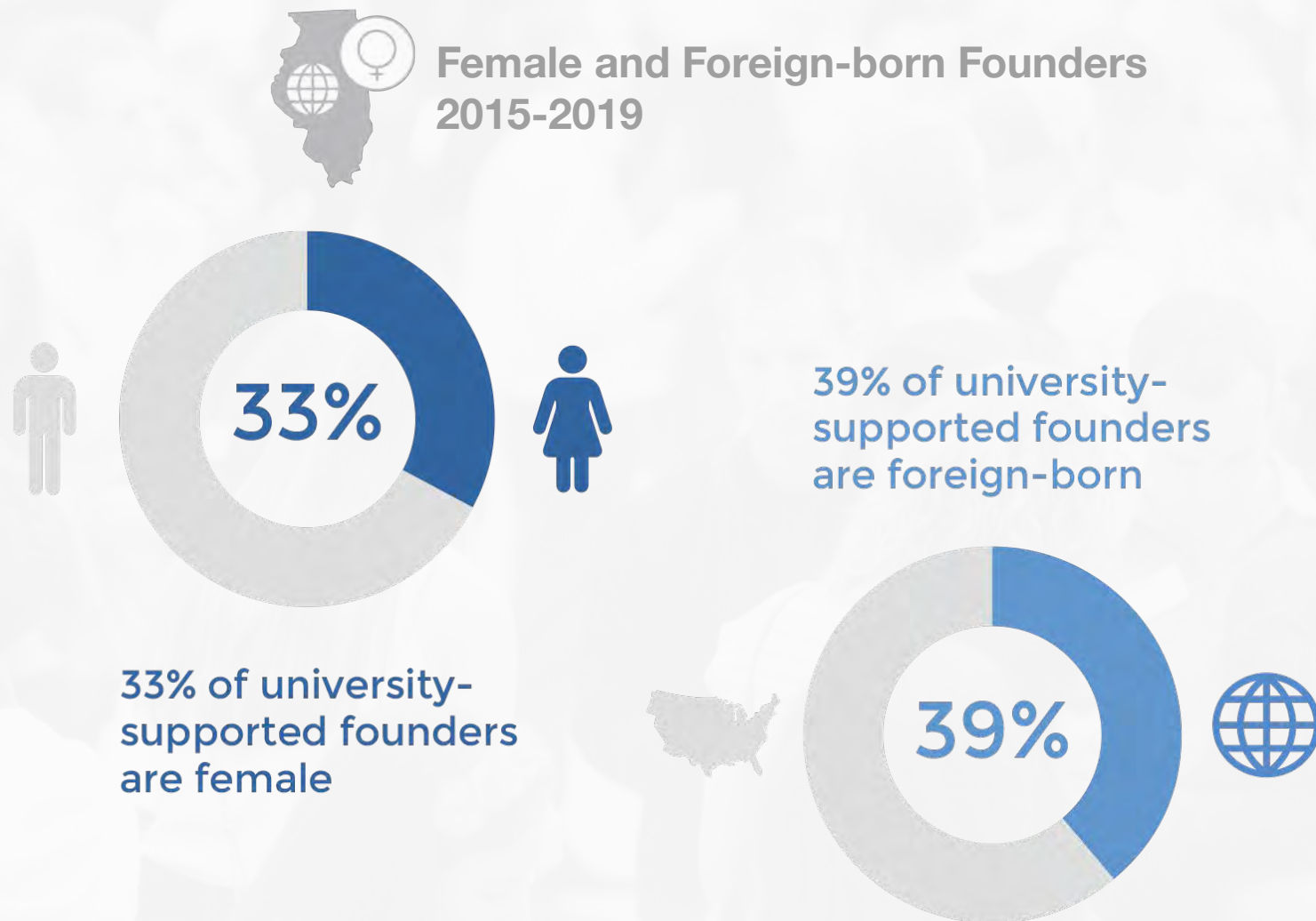
I-Corps and SBIR/STTR participants are more likely to remain active, and remain in Illinois.

## Founders

Around **one-third** of university-supported founders are female, around **2X** the national average.

Female founders more likely to remain active, raise funding

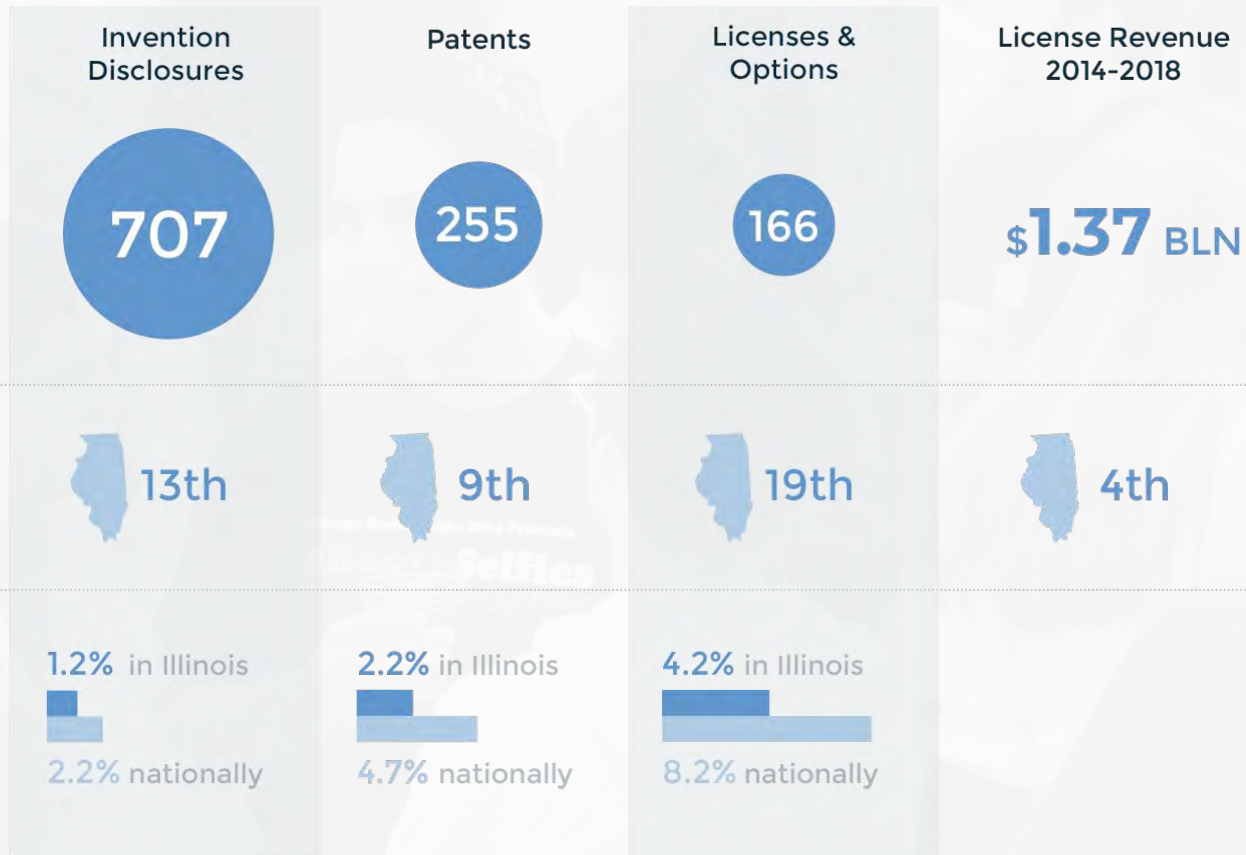
Foreign-born founders are critical to the startup pipeline. **Around 40 percent** of founders are foreign-born.







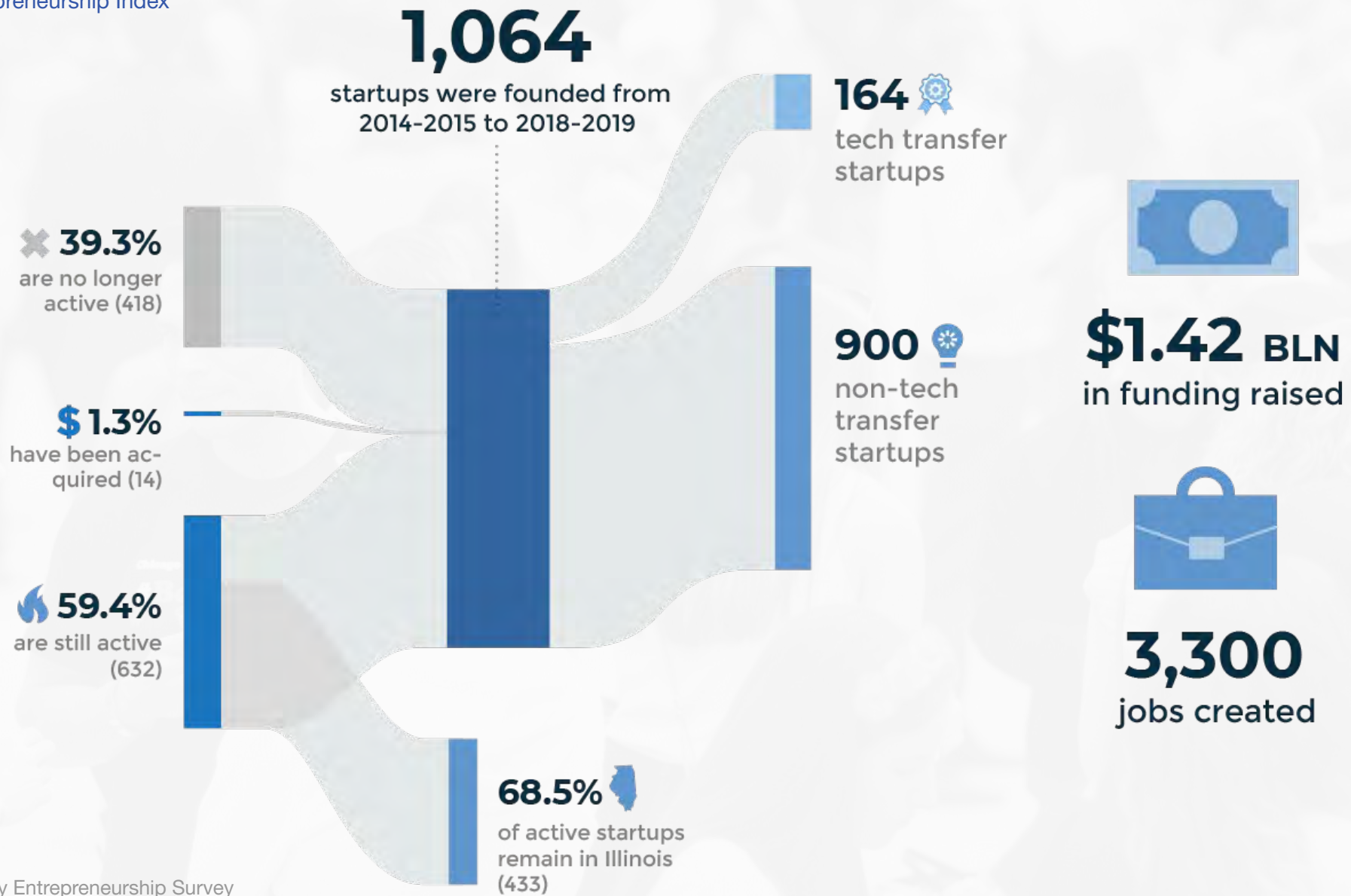
## Tech Transfer Metrics 2018



## Tech Transfer

Illinois **rank 13th** for invention disclosures, **9th** in patents, and **19th** in licenses & options.

Quality over quantity, Illinois **rank 4th** in license revenue over the past five years.



Source: ISTC University Entrepreneurship Survey



## Strengths

- ➕ Startup activity continues to climb
- ➕ University funding catalyzes growth
- ➕ Representation and success of female founders

## Challenges

- Retention of high-growth startups
- Loss of foreign-born founders
- Tech transfer output

## Looking Forward

- ✓ SBIR matching
- ✓ Illinois University-Industry Innovation Vouchers
- ✓ Startup visa for foreign-born entrepreneurs





## Entrepreneurship in Action



EARTHSense

SERIONIX

NOWPOW

physIQ



# Thank You!





# UNIVERSITY ENTREPRENEURSHIP 2020

---



ILLINOIS  
INNOVATION  
INDEX

# Entrepreneurship at Illinois Tech: Building on the Past to Create the Future





# Illinois Tech's Rich History in Invention



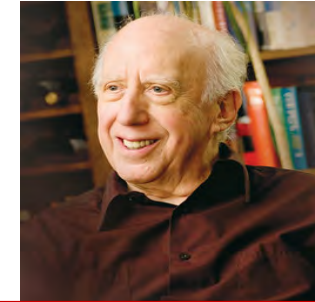
1944  
Marvin Camaras  
patents Magnetic  
Recording



1963  
Institute of Gas Technology  
design the eternal flame at  
the John F. Kennedy  
gravesite



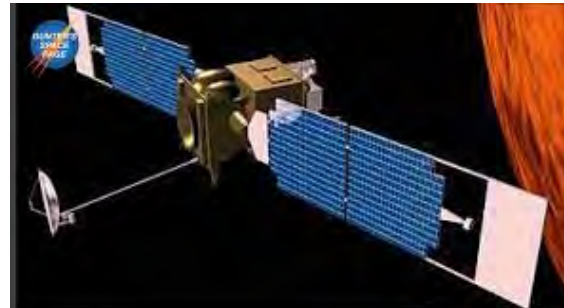
1969  
Ed Kaplan founded  
Data Specialties, Inc  
(now Zebra Technologies)



1971  
Leonard Reiffel Patents  
the Telestrator



1973  
Martin Cooper  
"Father of the Cell Phone"



1999  
Mars Global Surveyor reaches its destination  
in the Mars atmosphere. Thermal coatings  
manufactured  
at IIT Research Institute protected parts of the  
space vehicle as well as parts of the  
Pathfinder.

# Commitments to Start-Ups



2011 University Technology Park (\$7.2 million Incubator) opens

# IBM paid \$1.3 billion for Cleversafe



JOHN PLETZ



Technology and airlines



TWEET



SHARE



SHARE



EMAIL



REPRINTS



PRINT



Chris Gladwin

IBM answered one of the biggest trivia questions in Chicago tech, and it didn't have to use Watson.

How much did it pay last fall for Cleversafe, a Chicago-based storage provider? \$1.309 billion in cash.

I [previously reported the price](#) was between \$1 billion and \$1.5 billion. IBM penciled in the exact amount in its [annual report filed yesterday](#). The filing was first reported late Tuesday by Bloomberg.



# The Illinois Tech Tradition Continues...



INKMADE



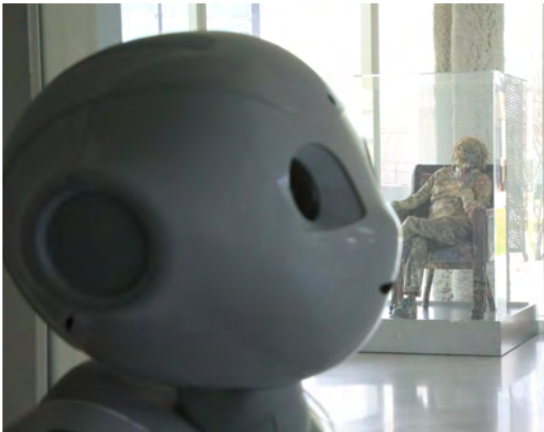
# Fueling Entrepreneurship for the Future

ED KAPLAN FAMILY INSTITUTE FOR  
INNOVATION AND TECH ENTREPRENEURSHIP





# ENABLING COLLISIONS





# UNIVERSITY ENTREPRENEURSHIP 2020

---



ILLINOIS  
INNOVATION  
INDEX



LAKE FOREST  
COLLEGE

**Lake Forest College has been piloting an Entrepreneurial Endurance™ curriculum to help increase the psychological resilience of our students and faculty.**

**Trish Thomas**  
**Director of Entrepreneurship & Innovation**

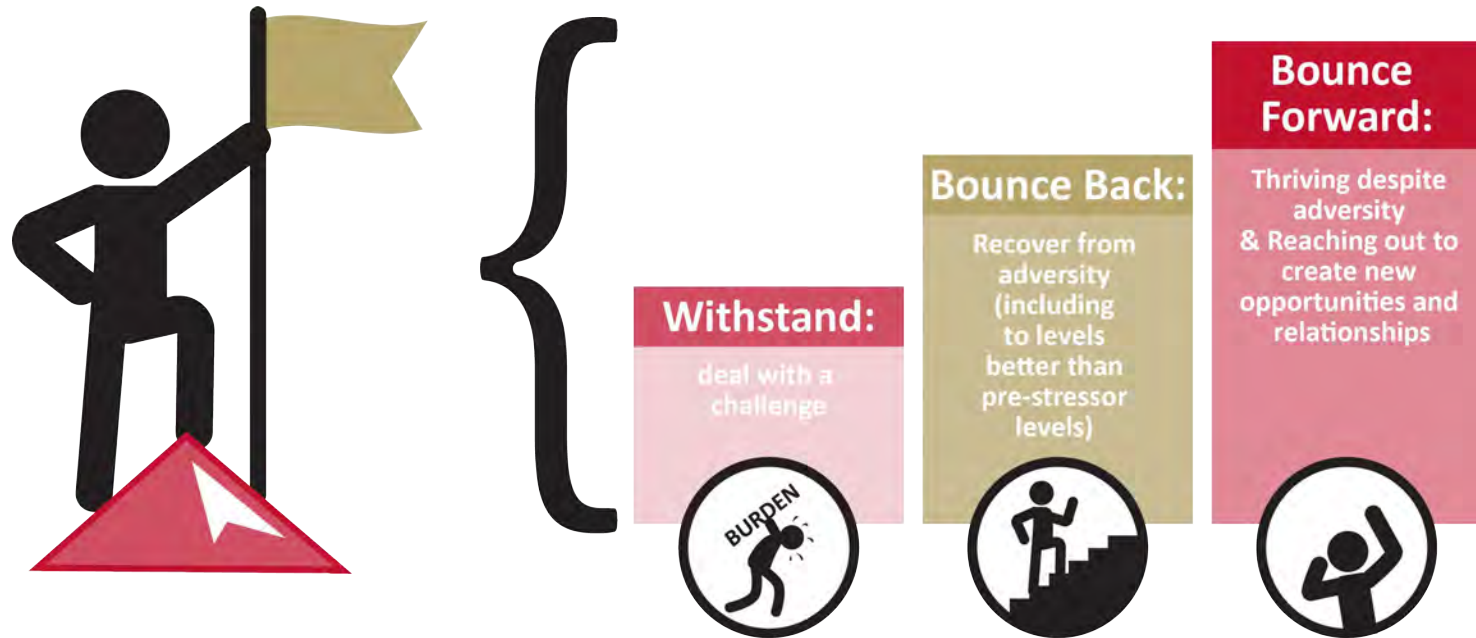
# Most startup failures can be directly correlated to factors related to psychological resilience with the founding team



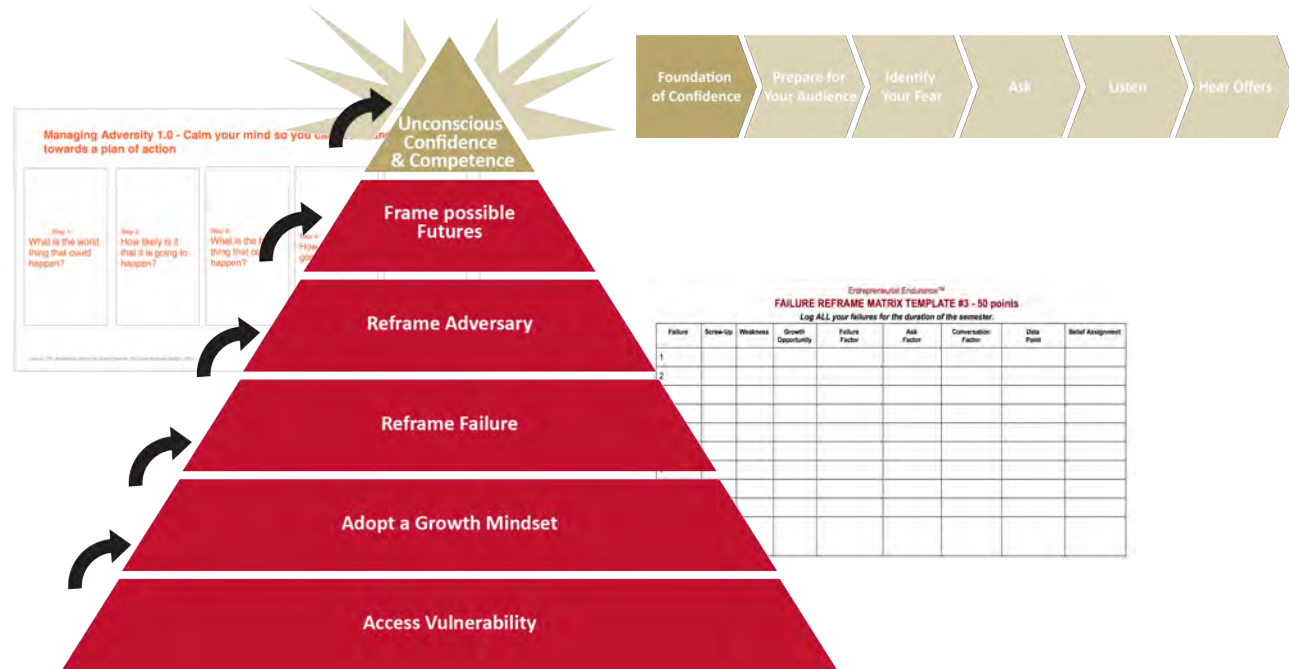
Source: CB Insights



# Our goal is to identify, test and improve methods of using Entrepreneurial Education as a means to improve the psychological resilience of students...



**...by adapting and applying frameworks from positive psychology and change management into an entire curriculum...**



...and measuring the impact of the work on the student well-being and entrepreneurial outcomes.



## Resilience Spectrum



I don't matter.

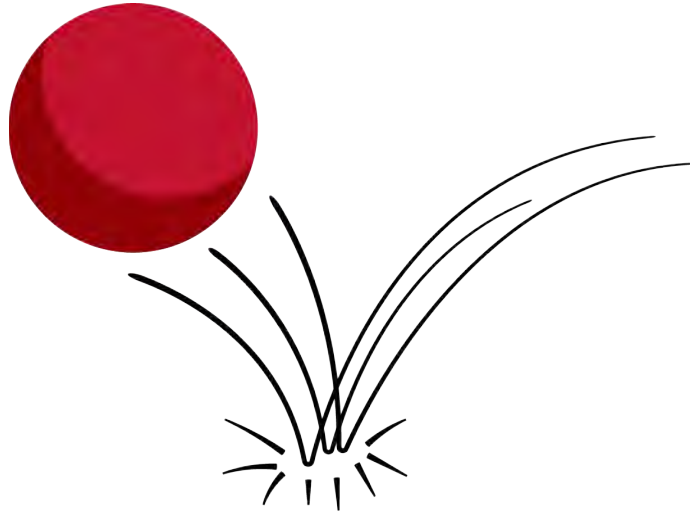


I matter.

©2020 Kate Jackson. All rights reserved.



**An entrepreneurs ability to bounce back,  
and bounce forward, may have a bigger impact  
than any other factor in the entrepreneurial toolkit - *especially now***



# Managing adversity and reframing failure have always been an essential skills for entrepreneurs



# And, today, psychological resilience is more important than ever

**Kate Spade's death is part of a disturbing trend in the US that's getting worse**



*Elon Musk Details 'Excruciating' Personal Toll of Tesla Turmoil*

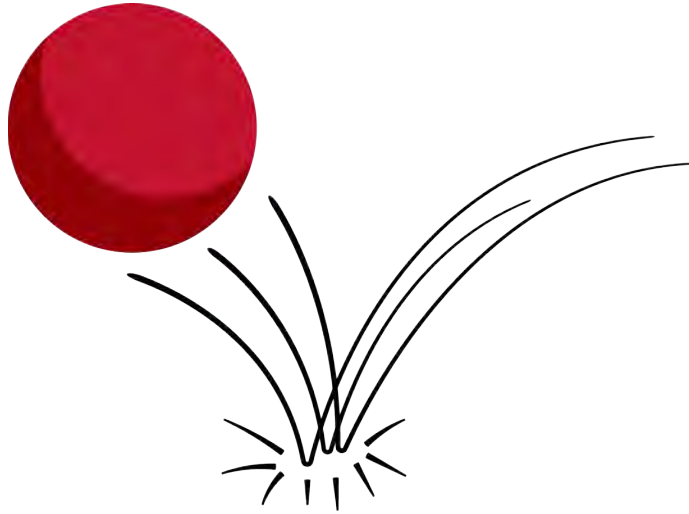


**Uber CEO takes leave of absence amid sexual harassment scandal**





# Bouncing back requires reframing failure and adversity by uncovering and untangling our implicit beliefs about it —and shifting how we respond in the future



Source: *How to Bounce Back from Adversity* by Joshua D. Margolis and Paul Stoltz; Harvard Business Review  
<https://hbr.org/2010/01/how-to-bounce-back-from-adversity>

# Our students are “getting” how resilience leads to personal and business failures, and providing that context is causing them to dig in to the work

## LACK OF RESILIENCE

- Did not ask early enough
- Ticker-tape beliefs:
  - Magnifying and Minimizing
  - Externalizing
  - Arrogant leadership and mindset



## Resilience Factor

- Adora Cheung, CEO not able to attend to urgency of crumbling platform
- Told media the lawsuits were “deciding factor”



## LACK OF PSYCHOLOGICAL RESILIENCE

1

TUNNEL VISION

2

EXTERNALIZING

3

MAXIMINZING

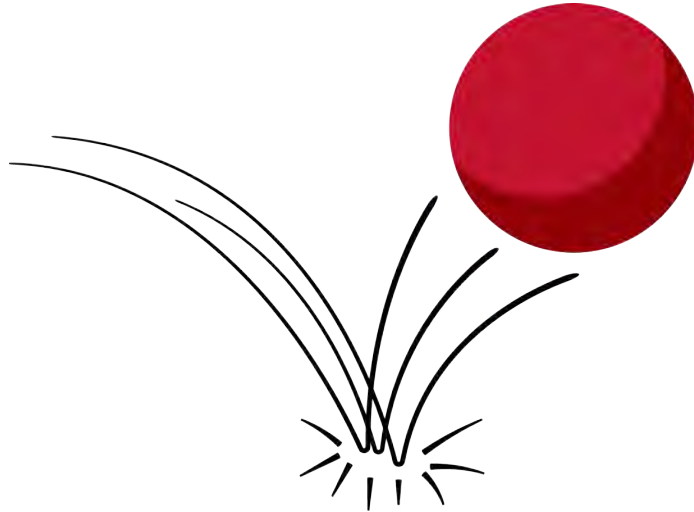
4

ICEBERG BELIEFS

The Apple phone before the Iphone:  
Motorola ROKR E1



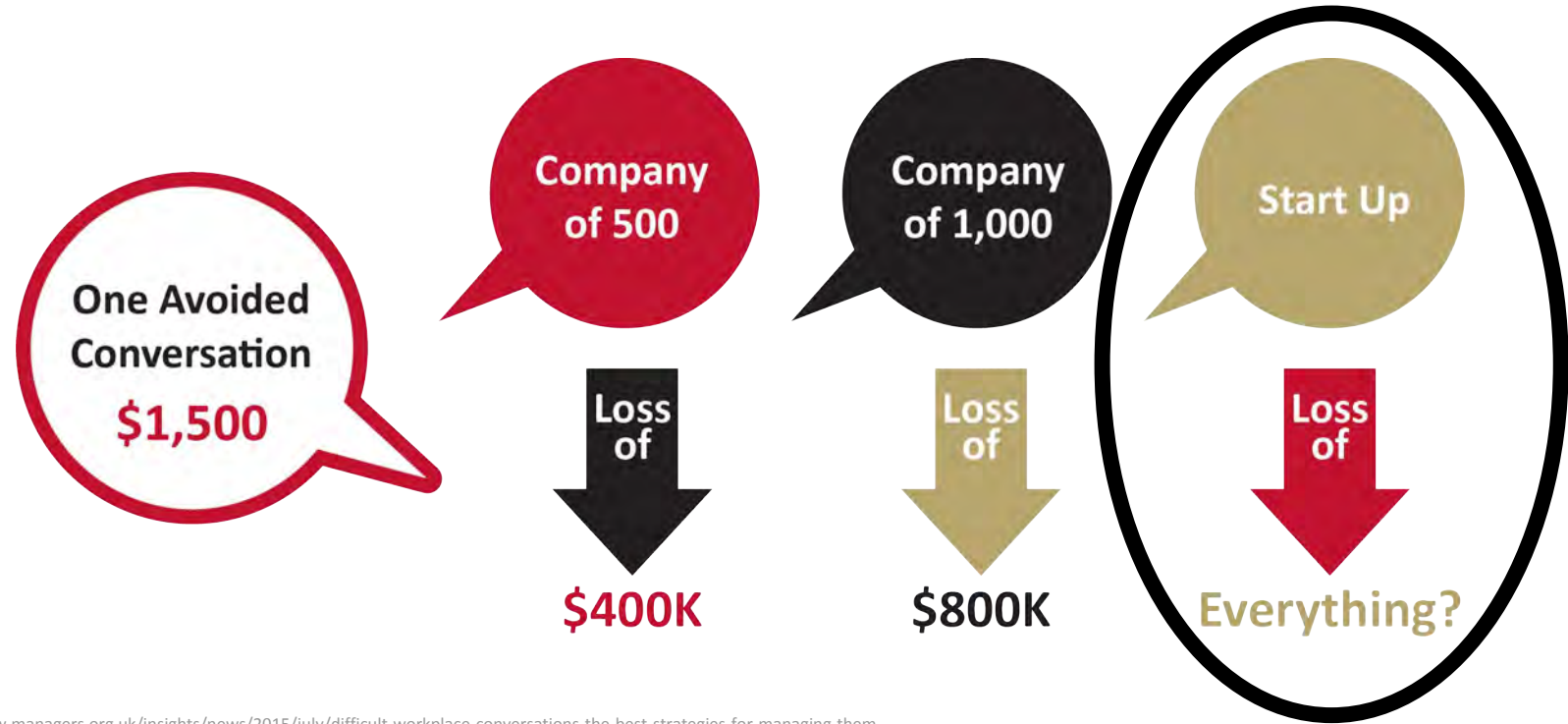
**Entrepreneurs bounce forward by fearlessly asking,  
navigating tough conversations, and  
building stakeholder networks of support**





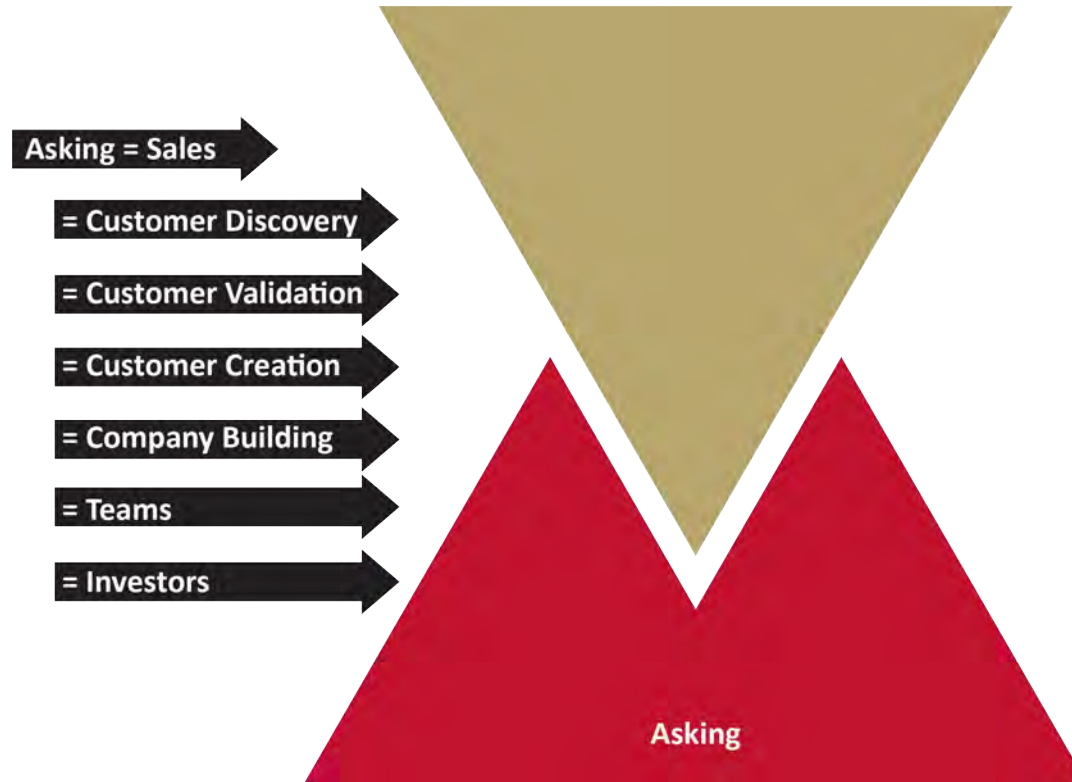
***90% of the time a failure to ask for a next step is the reason why deals or relationships don't move forward***

# 89% of people have never been taught how to have a difficult conversation - and for a start-up those conversations are necessary to survive



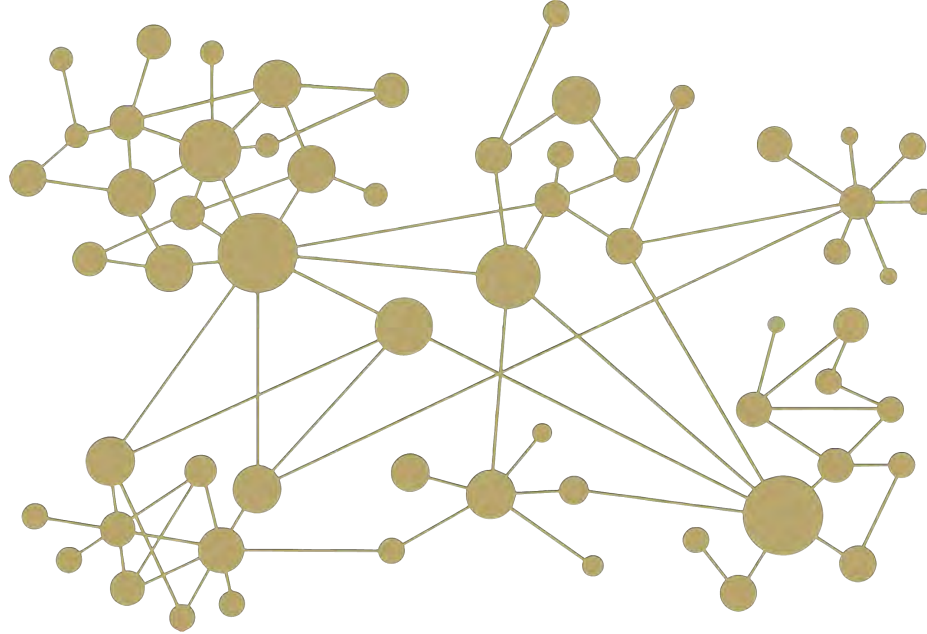
Source: <https://www.managers.org.uk/insights/news/2015/july/difficult-workplace-conversations-the-best-strategies-for-managing-them>

# Asking provides the foundation of startup stability





**Our hope is that by teaching students how to fearlessly ask and navigate difficult conversations it will make it easier for them to create and grow their networks**



Source: *The Network Effects Bible* by NfX



LAKE FOREST  
COLLEGE

**Stay healthy.**

**Trish Thomas**  
**Director of Entrepreneurship & Innovation**

# UNIVERSITY ENTREPRENEURSHIP 2020

---



ILLINOIS  
INNOVATION  
INDEX



Northwestern



**the garage**

We fuel transformation.

# PRACTICE WHAT YOU TEACH



"A world-class innovation center must practice what it preaches and be able to accommodate the changing needs and challenges of its community...It's a brave new world, and **no one is better prepared than the entrepreneurial leaders we are creating at The Garage.**"



Melissa Kaufman  
March 27, 2020  
[Chicago Inno Op Ed](#)

# THE (VIRTUAL) GARAGE



---

1. Mental Health

More opportunities for 1-on-1 interactions with peers, staff, and mentors

2. Community

More intimate, peer-driven virtual events

3. Transcend Time & Space

Workshops from any time zone, recorded



# (VIRTUAL) VENTURECAT 2020

A promotional graphic for the Northwestern VentureCat 2020 competition. It features a dark background with a large, stylized, multi-faceted geometric shape on the right side. The text is white and purple. At the top left, it says 'Northwestern | VentureCat' in a large font, followed by 'Annual Student Startup Competition' in a smaller font. Below that, it says 'Powered by The Levy Institute and Co-Sponsored by Lanny and Sharon Martin'. On the left, there is a circular portrait of Sam Shank, a man with short blonde hair, smiling. To the right of the portrait, it says 'FEATURING KEYNOTE SPEAKER Sam Shank, Kellogg '04, Head of Hotels at Airbnb and CEO of HotelTonight'. At the bottom left, it says 'May 20, 2020' in a large font, followed by '5:30 PM CT via Livestream' and 'RSVP: VENTURECAT.NORTHWESTERN.EDU' in a smaller font.

**Northwestern | VentureCat**  
**Annual Student Startup Competition**  
Powered by The Levy Institute and  
Co-Sponsored by Lanny and Sharon Martin

FEATURING KEYNOTE SPEAKER  
Sam Shank, Kellogg '04, Head of Hotels  
at Airbnb and CEO of HotelTonight

**May 20, 2020**  
5:30 PM CT via Livestream  
RSVP: VENTURECAT.NORTHWESTERN.EDU

Northwestern's annual student startup competition

**\$300K** in non-dilutive capital

**26** Semifinalist teams from across Northwestern

[venturecat.northwestern.edu](https://venturecat.northwestern.edu)

# UNIVERSITY ENTREPRENEURSHIP 2020

---



ILLINOIS  
INNOVATION  
INDEX



# RFU Innovation and Research Park & Helix 51 Incubator





## INVESTING IN SUCCESS: RFU's NEW INNOVATION and RESEARCH PARK (IRP)

*Opened and Occupied in January 2020!*

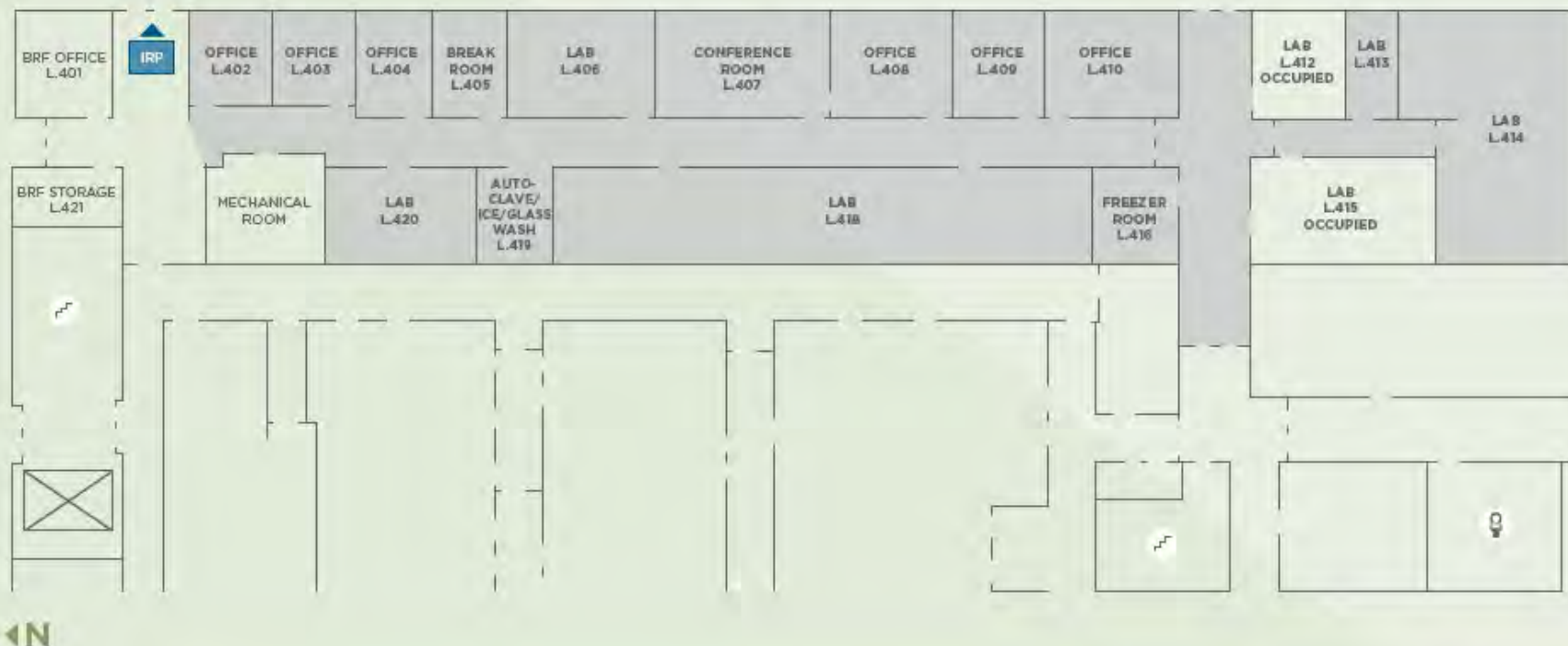


- Four floors (100,000 square feet) of bioresearch laboratory, office and meeting space
- 32,000 square feet devoted to:
  - **Helix 51 Incubator** fostering and housing Chicagoland biomedical startups from RFU and the region – **Phase 1 is open!**
  - **Collaboration space** for industry partners and a **Soft Landing Pad** for global companies
  - **Translation** of scientific discovery to patient care
- Forum for concentrating some 35,000 regional healthcare and pharmacy experts

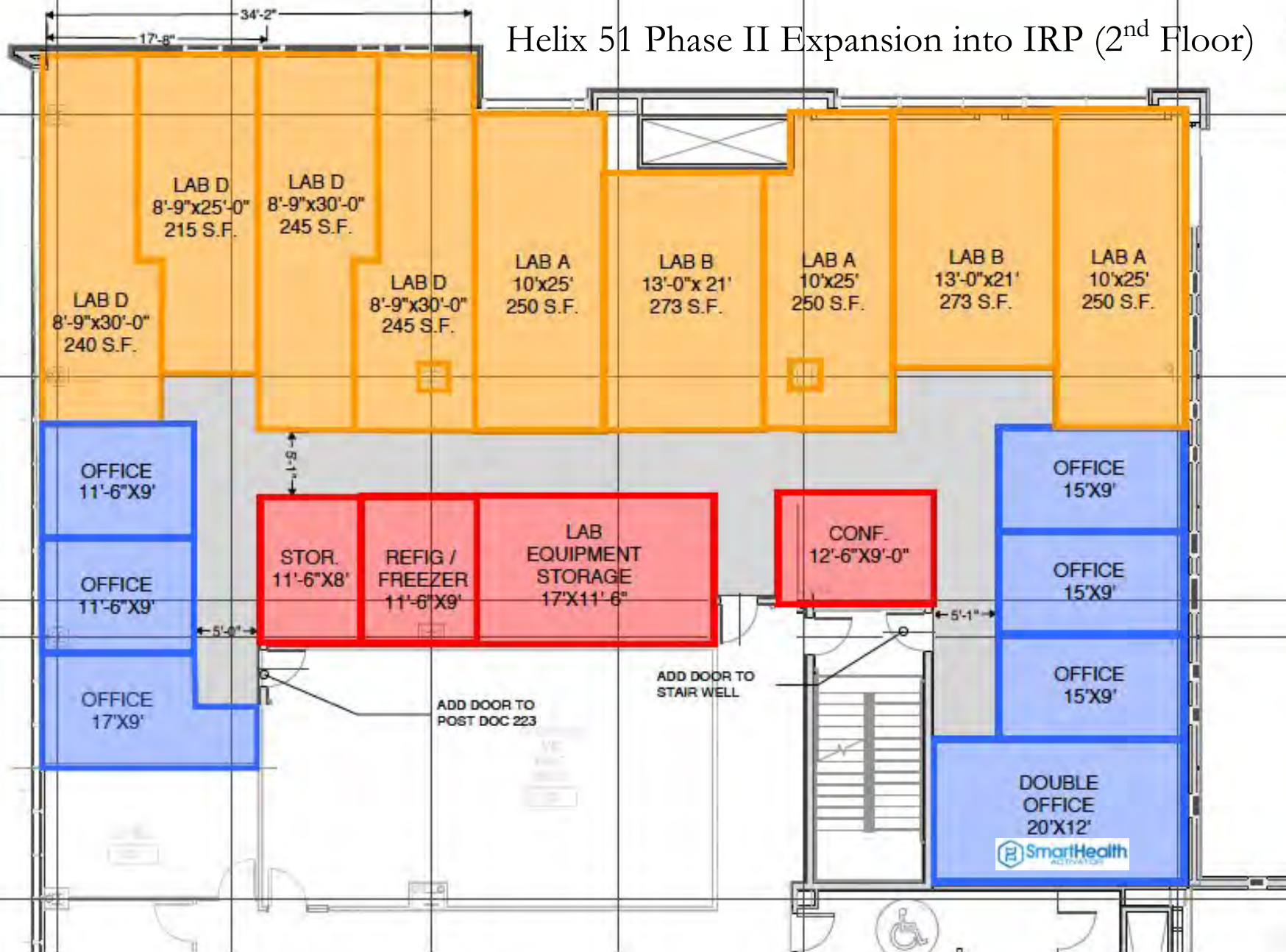
[Learn more about the Innovation and Research Park](#)



## HELIX 51 INCUBATOR SPACE PLAN



# Helix 51 Phase II Expansion into IRP (2<sup>nd</sup> Floor)



PARTIAL SECOND FLOOR PLAN

INCUBATOR RESEARCH LABS

9/20/19

1/8" = 1'-0"

LEGATARCHIT

DESIGN | PERFORMANCE | SUSTAINABILITY



# HELIX 51 INCUBATOR

## Phase 1 (BSB)

Opened May 2019



Total Space:  
5,400 sf

- Early Stage Companies
- Wet labs and Offices
- Conference Room
- Equipment:
  - Chemical fume hood
  - Biosafety cabinet
  - -80° Freezer
  - Emergency Power
  - Autoclave/glassware washer
  - Ice machine
- Access to RFU:
  - Research cores



***Cogent Lab***

# HELIX 51 INCUBATOR

## Phase 1 (BSB)

Opened May 2019



### Members

Company	Focus
Inspirotec	Allergen/Pathogen Detection in Homes/Offices *
BRL Bio	Fibrotic Disease including cancer, NASH, schleroderma*
Cogent Lab	Analytical CRO for CBD*
SmartStable Isotopes	Contract R&D for isotopes for drugs and diagnostics*

\* Has Covid-related projects underway

# HELIX 51 INCUBATOR

## Phase 1 (BSB)

Opened May 2019



### Assisting Other Companies (Not Currently in Incubator)

Company	Focus
NeuroLucent (B. Stutzmann)	Alzheimer's Disease/ Traumatic Brain Injury
Resuscitation Therapeutics* (R. Gazmuri)	Cardiac arrest
Harbor Biotech (D. Peterson)	Stroke
Leishvac (KP Chang)	Cancer and Infectious Disease vax
Targacell*	Cardiac stem cell delivery for myocardial infarction

\* Has Covid-related projects underway



# MEMBER TRAINING AND EDUCATION

---

- **Business skills:** ComOps, Marketing, Project Management
- **Leadership - Pitch training**
  - Business plan development & competitions
  - Elevator pitches
- **Financing:** Grant Workshops & Consulting, dilutive and non-dilutive
- **Transactions:** IP & Deal-making



FUNDING: KEY INDUSTRY SUPPORTING PARTNERS  
2019 AND 2020

***Baxter***



abbvie

# UNIVERSITY ENTREPRENEURSHIP 2020

---



ILLINOIS  
INNOVATION  
INDEX



# Accelerating Innovation at the University of Chicago

Illinois Innovation Index | May 18, 2020



# Introduction

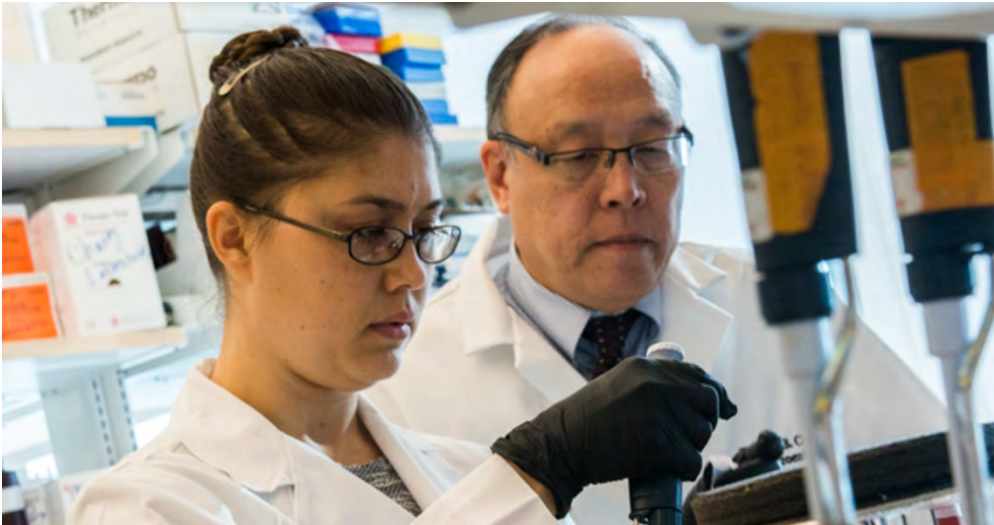


## Jay Schrankler

*Associate Vice President and Head of the Polsky Center for Entrepreneurship and Innovation at the University of Chicago*

- Joined the Polsky Center at the University of Chicago in late July 2019
- Background in technology, electrical engineering, computer science, aerospace, and semiconductors
- Former senior executive at Honeywell responsible for managing various global units spanning the company's space systems, automation and environmental controls divisions
- Transformed the Office for Technology Commercialization at the University of Minnesota, into a top-rated university technology transfer office, generating \$560+ million in revenue and 140 research-based spinouts with 9 exits
- Delivered commercialization training to USAF research labs, the state department and government in Poland, the government of KSA, and several universities in Japan, Spain, US, and Norway

# About the Polsky Center at the University of Chicago



- Launched 20+ years ago within the University of Chicago Booth School of Business
- Home of a nationally-ranked startup accelerator (Grubhub, Braintree/Venmo, Simple Mills), an honor shared only by other notable accelerators such as Y Combinator and Techstars
- 60-person+ professional staff dedicated to venture creation, investor training, tech commercialization, and industry relations
- Centralized point of access for commercial partnerships related to University of Chicago's science, technology, and research

# Two Decades of Success in Venture Creation



This year marks the 24<sup>th</sup> year of the Edward L. Kaplan, '71, New Venture Challenge

**330+**  
**COMPANIES**  
still operating today

**\$1+**  
**BILLION**  
funding raised

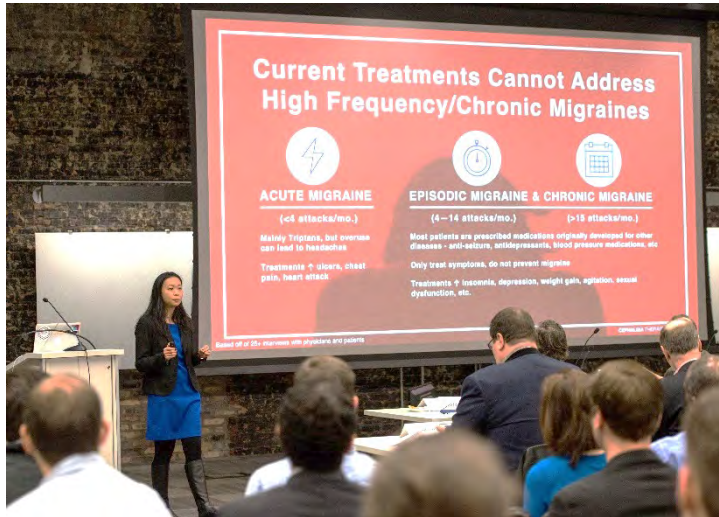
**\$7.5+**  
**BILLION**  
in mergers and exits



**POLSKY**



# Funding for University-Based Startups



## George Shultz Innovation Fund

Awards \$1 million in funding annually through two cycles



## Edward L. Kaplan, '71, New Venture Challenge

Awards \$1 million in funding and prizes across 5 tracks each year



## UChicago Startup Investment Program

\$25 million from the University's endowment to invest in startups



# Research Investments and Collaboration

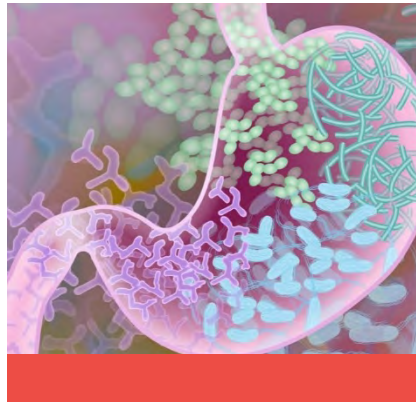


## Pritzker School of Molecular Engineering

\$100M gift to establish first-of-its kind school

40 faculty across 8+ science and engineering fields

100+ patent disclosures



## Duchossois Family Institute (Microbiome)

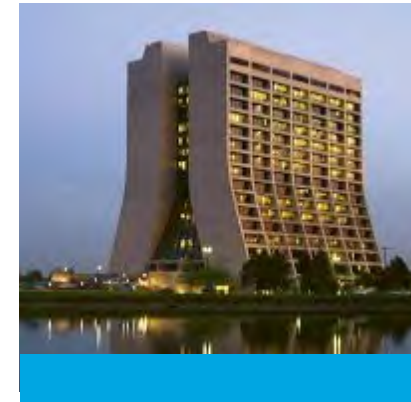
\$100M gift to establish a research institute at the University of Chicago to harness the microbiome and immunity for human health



## Argonne National Laboratory

16 research divisions, 12 centers, and five national user facilities

1,500-acre site in DuPage County and now an new office in Chicago



## Fermi National Accelerator Laboratory

1,750 scientists and engineers collaborates with 50+ countries on physics experiments

6,800-acre site in Batavia, Illinois



## Computer Sciences

Rapid expansion across multiple areas, including AI/machine learning, human-computer interaction, quantum computing, and data science

# Chicago Quantum Exchange



Multi-institution collaboration focused on positioning Illinois as a powerhouse for quantum information science

## MEMBER INSTITUTIONS:



## INDUSTRY PARTNERSHIPS:



## BY THE NUMBERS:



**\$65M**

FEDERAL FUNDING TO CQE INSTITUTIONS IN 2019



**130+**

RESEARCHERS



**6**

INSTITUTIONS ACROSS CHICAGO

**POLSKY**

# Driving Innovation in Tech Commercialization

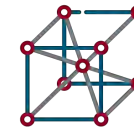
- Launched Polsky Science and Technology, which operates at the intersection of science and business
- New functional model is built to scale and supports the entire commercialization value chain—from IP protection to technology licensing and new venture creation
- Paving the way to transform Chicago into a global city for technology, science, and deep tech innovation



Deep Tech



Data Science



Materials Science

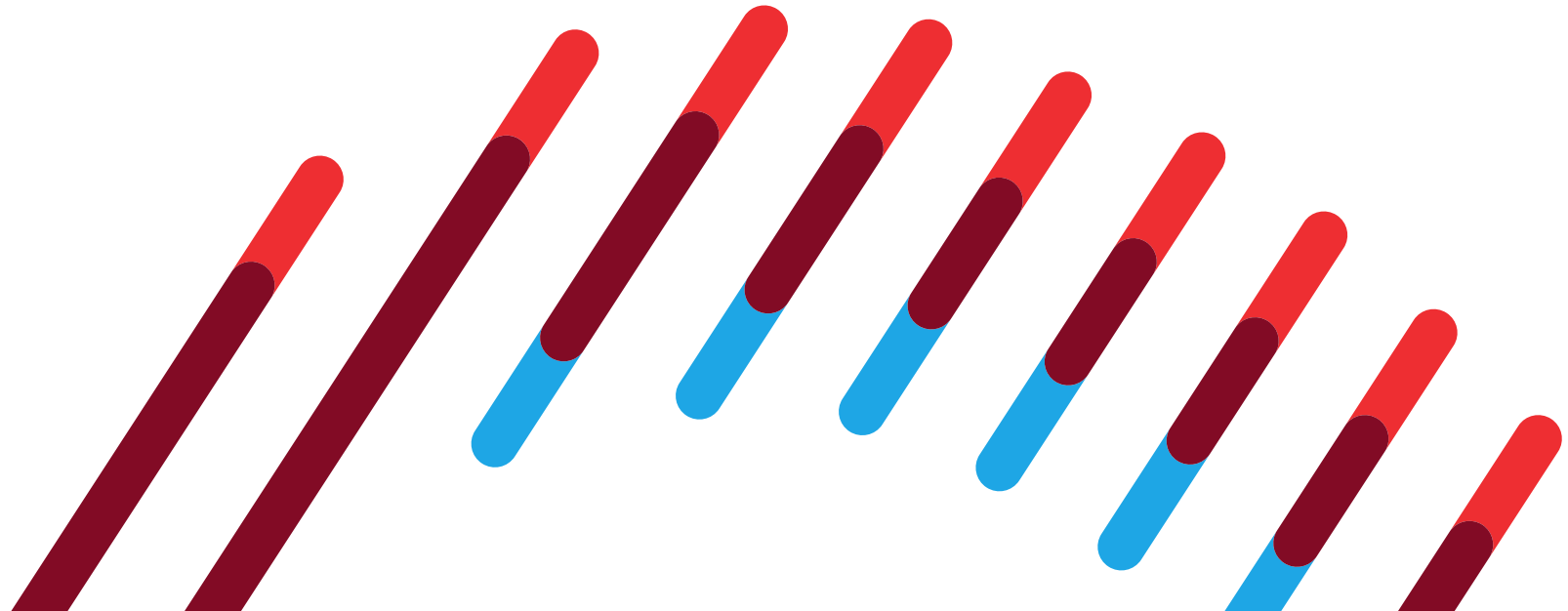


Life Science



Quantum

// Thank You





# UNIVERSITY ENTREPRENEURSHIP 2020

---



ILLINOIS  
INNOVATION  
INDEX





Chicago's only

**PUBLIC RESEARCH UNIVERSITY**



**THE  
UNIVERSITY OF  
ILLINOIS  
AT  
CHICAGO**

TJ Augustine, PhD, MPP  
Vice Chancellor for Innovation



33,000+  
students



80%  
of UIC graduates  
stay in Chicago



\$372M  
sponsored research



16 Top-ranked colleges  
& health sciences system



### Student focus

Experiential learning  
opportunities help students  
gain real-world experience as  
they work side-by-side with  
researchers

# WE ARE HERE

Located in the heart of one of the world's greatest cities, UIC is a vital part of the educational, technological and cultural fabric of the region. With more than 33,000 students, 16 colleges, a hospital and a health sciences system, UIC is the city's largest university. We are proud to be recognized as having one of the most ethnically and culturally rich college campuses in America.

UIC is a hub of innovation and cutting-edge research with a commitment to discovery and solving real-world problems. From discovering new ways to reduce the spread of HIV to developing imaging techniques that detect aggressive cancers or visualizing the blood vessels of our brain, our researchers translate research into action to improve the health and well-being of our communities.

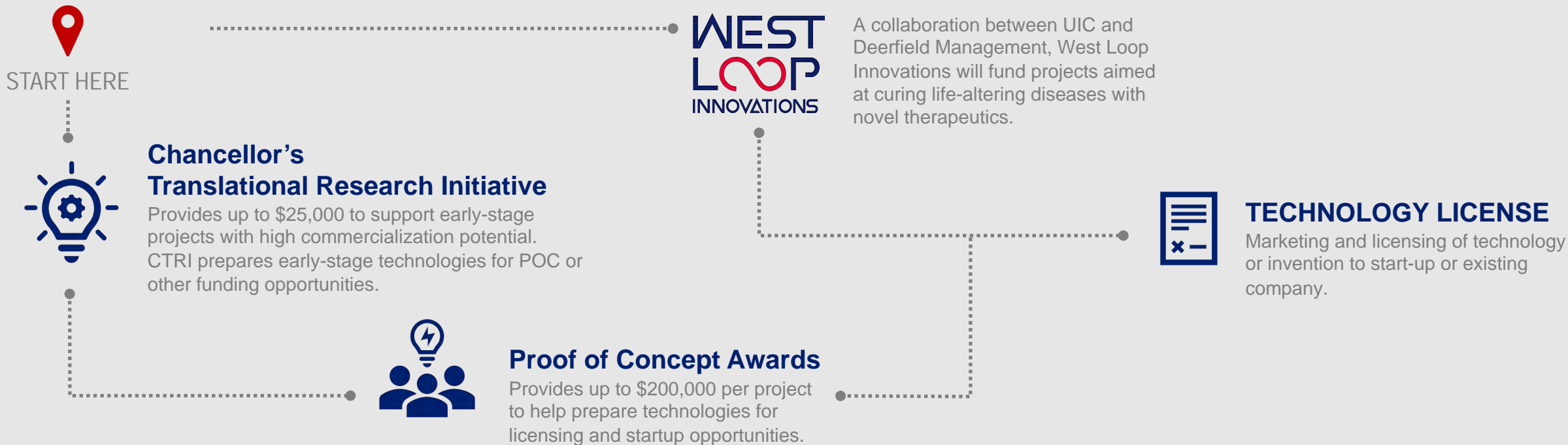


# WE DISCOVER

Our approach to innovation and economic development is strongly rooted in scientific research, discovery, and creating impact. Our researchers push the boundaries of traditional research to find new ways that innovation and discovery can be transformed to make a global impact.

The technologies developed and commercialized at UIC lead to licenses with global and regional companies, the launch of startup companies that develop new products and services to improve lives, create high-tech jobs and generate tax revenues for the state and local community, and earn royalty revenue for the University.





# ACCELERATING TRANSLATIONAL RESEARCH

We support efforts to move the knowledge and discovery gained from basic science to its application in clinical and community settings. There are several funding programs available to faculty members aimed at accelerating the commercialization of technologies being developed at UIC. These programs help to bridge the funding gap that often exists between translational research and commercialization.





## INNOVATION SPACE

Co-working, office and lab space for entrepreneurs and startups.



## ENTREPRENEUR EDUCATION

Courses and certificates that provide entrepreneurs with the knowledge, skills and mindset required to formulate ideas that could become successful new businesses.



## WORKSHOPS & EVENTS

A wide variety of events, workshops, speakers, panels, competitions, and more.

- Pitch competitions
- Networking events



## STARTUP SUPPORT

Programs designed to accelerate the growth and success of young entrepreneurial companies.

- **Entrepreneurs in Residence** provide free consulting to new startup ventures and prospective entrepreneurs on a wide variety of business topics – from how to attract investment to marketing and communications help.
- **Shared Services Program** to help with short-term project needs such as website design, multimedia production, social media assistance, or business strategy development.
- **SBIR/STTR Technical Assistance** helps entrepreneurs applying for federal grants to learn best practices for applications, draft a budget, or write a commercialization plan, among other topics.

# GROWING ENTREPRENEURIAL ECOSYSTEM

UIC has a growing entrepreneurial ecosystem and there is an increasing demand for programs and resources to help students and faculty turn their ideas and technologies into startups. We will help bridge the gap between knowledge and action by providing the space, educational resources, and programming to support UIC entrepreneurs.



## CLINICAL TRIALS

UIC is participating in multiple clinical trials to help find safe, effective treatments for COVID-19.



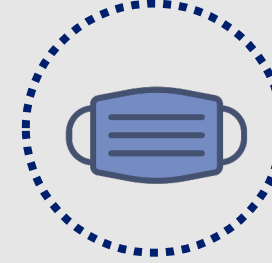
## FACE SHIELDS

UIC engineers developed a face shield made from thin plastic that could be manufactured at UIC's Engineering Makerspace in 20 seconds.



## FILTERING FACEPIECE RESPIRATOR

UIC engineers worked with the Innovation Center to develop an effective alternative to N95-like filtration equipment.



## INTUBATION PROVIDER PROTECTION

Easy to deploy tent-like structure inspired a protection system developed at UIC's Innovation Center that can be used across a variety of beds (e.g. ICU, OR, ER).



## FACE MASKS

UIC's College of Architecture, Design, and the Arts partnered with the Chicago Shakespeare Theater to make cotton face masks for patients in hospitals and convalescence wards throughout the Chicago area.



## SWABBING PROTECTION

A mask with a port was developed at the UIC Innovation Center that provides access for testing without exposing healthcare workers to the inevitable coughing caused by the testing itself.



# COVID-19 RESPONSE

UIC faculty, staff and students are offering their time, energy and ideas to creatively solve issues related to testing, capacity and PPE supplies in response to the COVID-19 pandemic. We are leveraging the innovative spirit of campus to meet the growing needs of the broader health community.

Our faculty have created new face shields, fabricated masks, and developed other novel PPE to help slow the spread of the coronavirus. UIC's academic health enterprise, UI Health continues to address the growing needs of the pandemic through its clinical operations. Nearly 200 of our medical students graduated early to help meet the demand for health care workers and we launched three COVID-19 triage and testing sites to help manage the influx of patients with symptoms. UIC public health experts have also produced estimated numbers of total cases and projected models of tests needed to keep pace with new cases.







**Office of the Vice Chancellor for Innovation**

[innovation.uic.edu](http://innovation.uic.edu)

[ovci@uic.edu](mailto:ovci@uic.edu)

# UNIVERSITY ENTREPRENEURSHIP 2020

---



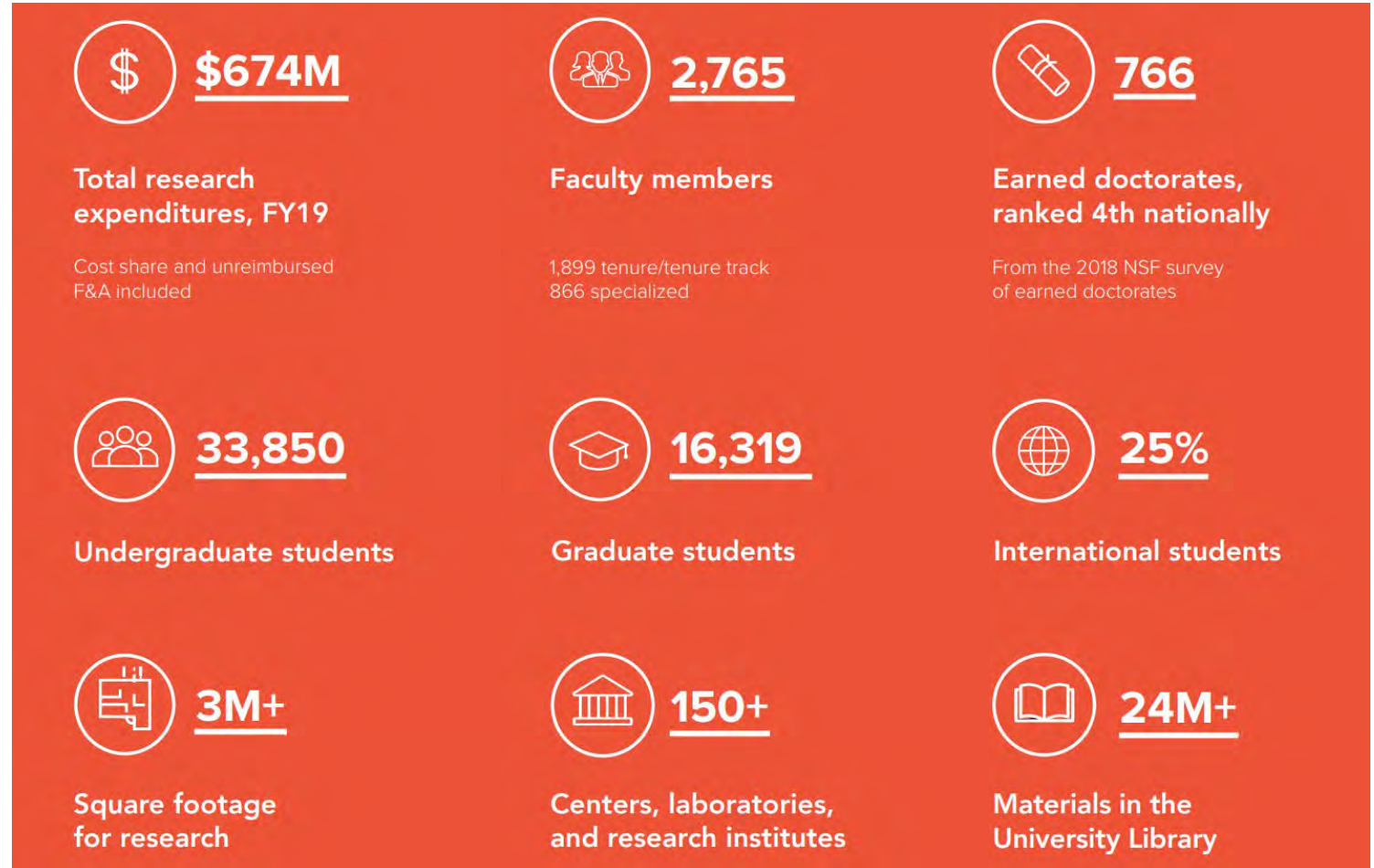
ILLINOIS  
INNOVATION  
INDEX



WE DO  
THE  
IMPOSSIBLE  
EVERY  
DAY.

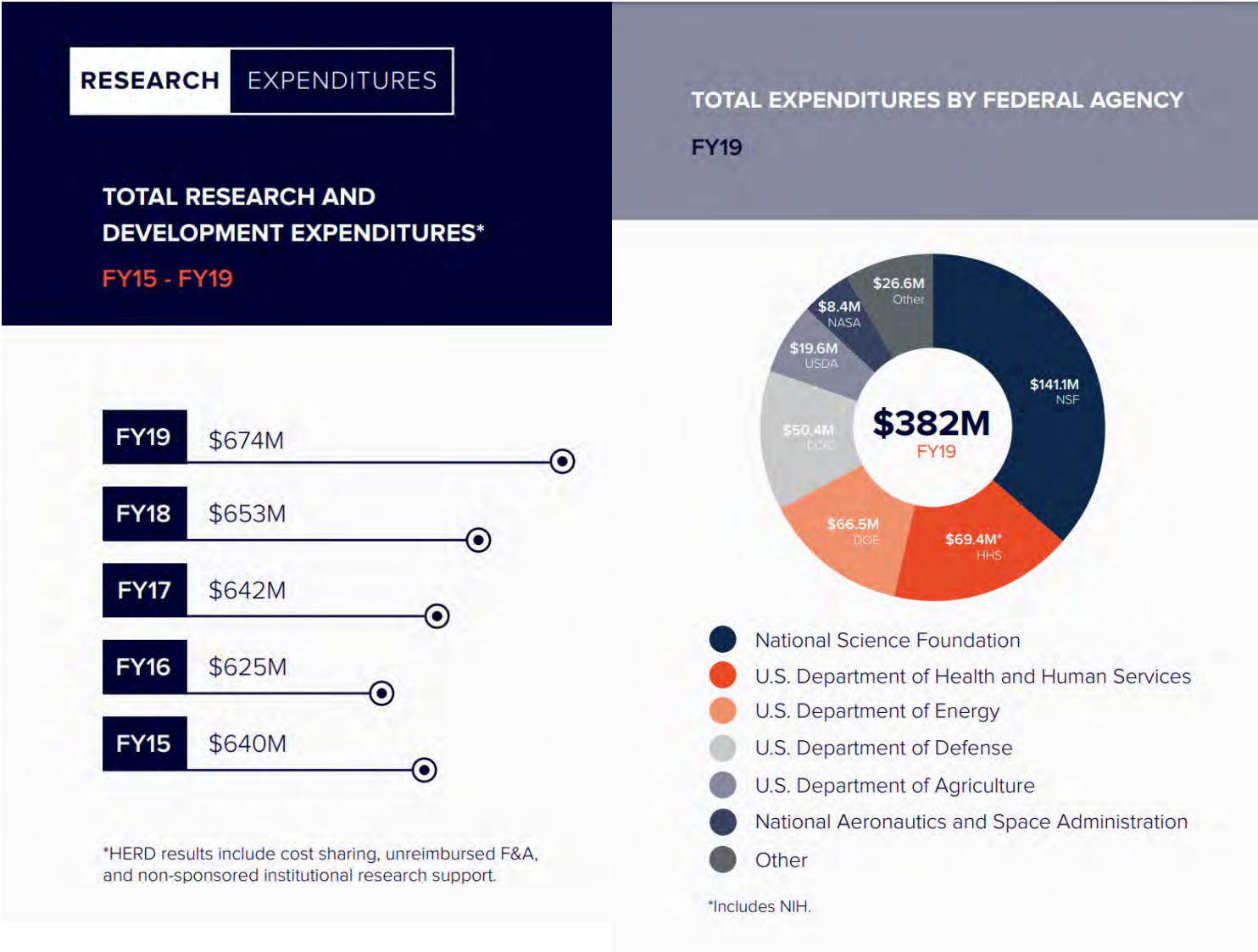
**I**  
ILLINOIS

- Since its founding in 1867, the University of Illinois at Urbana-Champaign has earned a reputation as a world-class leader in research, teaching, and public engagement.
- Each year we welcome more than 33,000 undergraduate students across our nine undergraduate divisions – offering nearly 5,000 courses in more than 150 fields of study and awarding about 7,000 new degrees each spring.





- At Illinois, we’re among the nation’s research powerhouses – for the 6 years running, we have been awarded more funding from the National Science Foundation than any other university in the nation.
- The University of Illinois has a unique breadth of research expertise, with world-renowned strengths in the arts, agriculture, business, the humanities, and the social sciences, as well as top-ranked programs in the natural sciences and engineering.













- **C3 Digital Transformation Institute**, the University of Illinois is co-leading the \$367 million institute with Berkeley.
- New **Center for Digital Agriculture** announced, combining Illinois' expertise in engineering and agriculture
- New collaboration with the National Geospatial–Intelligence Agency to create the most powerful **non-classified geospatial system** in the world
- **C-NICE**: \$100 million partnership with Foxconn Interconnect Technology to create the Center for Networked Intelligent Components and Environments
- **IQUIST**: Illinois Quantum Information Science and Technology Center in collaboration with University of Chicago and national labs, including \$200M dollars in capital and infrastructure investments from the state
- **I ACT Autonomous vehicle track**
- \$50M Expansion of **Jump ARCHES** for expanded opportunities in healthcare engineering – partnership with OSF Hospital System



- World-changing achievements, discoveries, and creations are realized at Illinois.
- The University of Illinois ranks 10th in Pitchbook's 2019 study of top universities producing venture backed entrepreneurs.
  - With 563 entrepreneurs and 519 companies
- Robust programs to support commercialization and entrepreneurship
  - Office of Technology Management
  - Technology Entrepreneur Center
  - Enterpriseworks incubator
  - Illinois Ventures
  - I-Corps
  - iVenture Accelerator

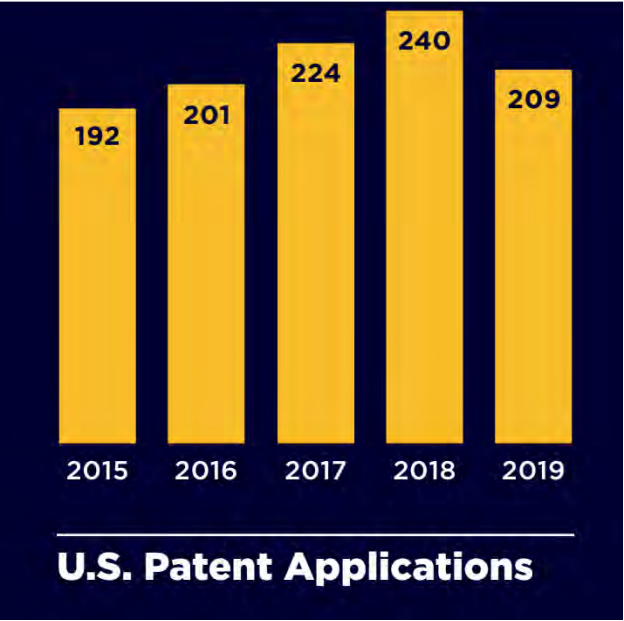
## PitchBook Universities: 2019

Rank		University	Founder count	Company count	Capital raised
1		Stanford University	1,288	1,114	\$37.8B
2		University of California, Berkeley	1,235	1,103	\$28.6B
3		Massachusetts Institute of Technology (MIT)	1,012	881	\$25.6B
4		Harvard University	987	882	\$32.6B
5		University of Pennsylvania	910	828	\$17.8B
6		Cornell University	796	735	\$23.9B
7		University of Michigan	745	670	\$15.2B
8		Tel Aviv University	694	577	\$10.6B
9		University of Texas	682	622	\$9.2B
10		University of Illinois	563	519	\$11.5B

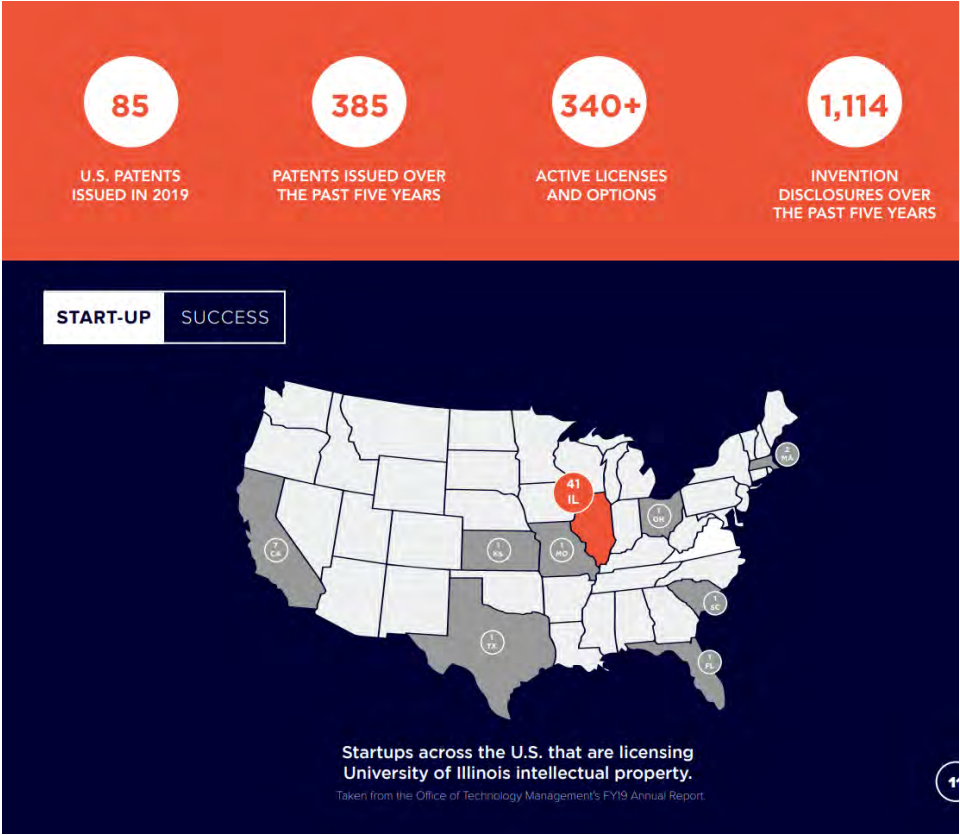
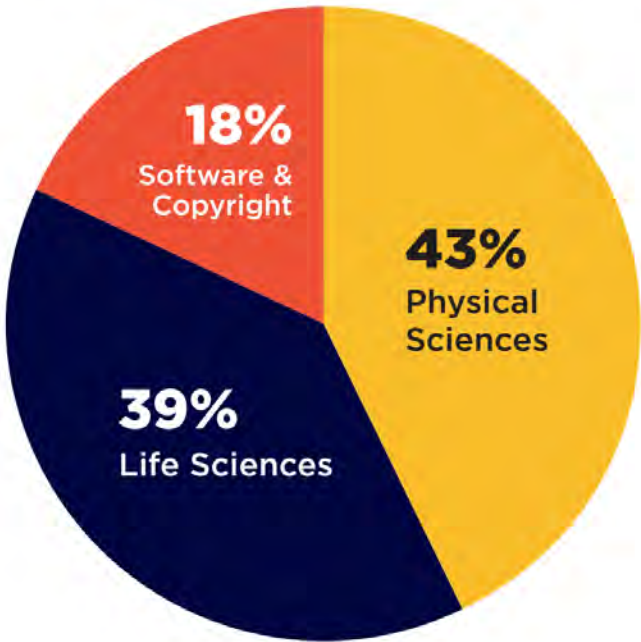


- The University of Illinois System remains in the top 25 on the National Academy of Inventors' list of Top 100 Worldwide Universities Granted U.S. Utility Patents.

**I** ILLINOIS  
Office of Technology Management



**2019 Inventions by Innovation Type**





- The campus-wide Cozad New Venture Challenge, held annually since 2000, encourages students to create new businesses, teams compete for over \$250,000 in funding and in-kind prizes.
- Illinois I-Corps
- Illinois Innovation Prize awards \$20,000 annually to a creative student working innovative for societal impact
- Intellectual Property Clinic
- SocialFuse entrepreneur networking
- Chicago Entrepreneurship Workshop sends students to Chicago each spring for a three-day technology entrepreneurship workshop.

Chicago Entrepreneurship Workshop



Cozad New Venture Challenge



Illinois I-Corps



Illinois Innovation Prize



- NSF I-Corps is a public-private partnership program that teaches university faculty and student entrepreneurs to identify valuable product opportunities that can emerge from academic research, and provides entrepreneurship training to participants.
- Faculty and students working on STEM-related technology can participate in the I-Corps program and receive up to \$2,000 to participate in the customer discovery process of their innovation.
- The Illinois I-Corps Site offers 4 cohorts a year (2 per semester) on a rolling submission application cycle.





- Established in 2000 as one of the country's first university VC firms
- 95 Startups funded since inception, focusing on technology and science
- \$31 in additional outside funding for each Illinois Ventures \$1 invested
- Illinois Ventures manages return-focused venture funds which are financed through external limited partners and dedicated to novel technologies and healthcare innovations.
- Invest in seed-stage opportunities developed at the University of Illinois System

## ILLINOIS VENTURES



- iVenture is the educational accelerator for top student startups at the University of Illinois.
- Launched in Summer 2015, the iVenture Accelerator supports a class of the university's top student startup teams to spend the summer on campus with the time and support they need to find product-market fit, build prototypes, pilot programs, build key partnerships, and scale.
- \$2,500 stipend per Fellow and up to \$10,000 in seed funding per startup
- Engaging with Chicago Startup Ecosystem





- Research Park is a leading innovation hub for technology commercialization with an environment that cultivates startups and technology for established companies.
- 2,200 employees: including 800 students
- EnterpriseWorks is a technology incubator operated and leased by the University of Illinois to commercialize its research.

## ENTREPRENEURSHIP SUPPORT

- |                              |                                    |
|------------------------------|------------------------------------|
| ■ Entrepreneurs-in-Residence | ■ I-Start Seed Accelerator Program |
| ■ SBIR/STTR Assistance       | ■ Events & Programs                |
| ■ NSF I-Corps Programming    |                                    |

## STARTUPS HAVE RAISED

- |                              |
|------------------------------|
| ■ \$1.1b in VC funding       |
| ■ \$120m in SBIR/STTR awards |





# HOW THE Entrepreneurship Ecosystem at Illinois CAN WORK FOR YOU



## ENTREPRENEURSHIP DISCOVERY

- Entrepreneurship Courses, Certificates and ILEE BS Degree ▶
- Entrepreneurship Treks
  - Silicon Valley Entrepreneurship Workshop ▶
  - Chicago Entrepreneurship Workshop ▶
  - ThinkChicago ▶
- Innovation Living-Learning Community (Innovation LLC) ▶
- Technology Disclosure ▶
- Entrepreneurship Forum ▶
- Entrepreneurship Lectures and Workshops
  - V. Dale Cozad Lecture ▶
  - Startup Cafe ▶
  - How I Failed Lecture Series ▶
- Entrepreneurship Student Organizations
  - Founders ▶
  - EntreCORPS ▶
  - Entrepreneurs Without Borders ▶

## COMPANY FUNDING

- AWARE (Accelerating Women And underRepresented Entrepreneurs) ▶
- IllinoisVENTURES: Venture Capital Outreach ▶
- Urbana-Champaign Angel Network (UCAN) ▶
- SBIR and STTR Technical Assistance Program ▶
- Share the Vision: Innovation and Startup Showcase ▶

## GROWTH & CUSTOMERS

- CEO Roundtable ▶
- Chicago Innovation Exchange (CIE) and Illinois Partnership ▶
- Entrepreneurs-in-Residence (EIR) ▶
- Incubation at EnterpriseWorks ▶
- Research Park Corporate Startup Intros ▶

## STARTUP IDEATION & VALIDATION

- Faculty Entrepreneurial Fellows (FEF) ▶
- Illinois Innovation Prize (IIP) ▶
- Intellectual Property Clinic ▶
- Illinois Proof-of-Concept Program (I-POC) ▶
- SocialFuse: Find Teammates ▶

## COMPANY & TEAM FORMATION

- Cozad New Venture Challenge ▶
- NSF I-Corps at Illinois ▶
- I-Start Entrepreneur Assistance Program ▶
- iVenture Accelerator ▶
- Office of Technology Management Licensing ▶

## INNOVATION SPACES

- EnterpriseWorks ▶
- Grainger IDEA Lab (Innovation, Discovery, Design, & Data Laboratory) [go.illinois.edu/idealab](http://go.illinois.edu/idealab)
- Research Park ▶
- Siebel Center for Design [designcenter.illinois.edu](http://designcenter.illinois.edu)
- Maker Spaces at Illinois
  - Illinois MakerLab [makerlab.illinois.edu](http://makerlab.illinois.edu)
  - CU Community FabLab [cucfablab.org](http://cucfablab.org)
  - ECE Open Lab [openlab.ece.illinois.edu](http://openlab.ece.illinois.edu)

## LEARN MORE [entrepreneurship.illinois.edu](http://entrepreneurship.illinois.edu)

- ▶ Origin Ventures Academy for Entrepreneurial Leadership | [business.illinois.edu/origin](http://business.illinois.edu/origin)
- ▶ Entrepreneurship Forum | [go.illinois.edu/eforum](http://go.illinois.edu/eforum)
- ▶ IllinoisVENTURES | [illinoisventures.com](http://illinoisventures.com)
- ▶ Innovation LLC (TEC) | [go.illinois.edu/innovationLLC](http://go.illinois.edu/innovationLLC)
- ▶ iVenture Accelerator | [iventure.illinois.edu](http://iventure.illinois.edu)
- ▶ Office of Technology Management | [otm.illinois.edu](http://otm.illinois.edu)
- ▶ Research Park | [researchpark.illinois.edu](http://researchpark.illinois.edu)
- ▶ Technology Entrepreneur Center (TEC) | [tec.illinois.edu](http://tec.illinois.edu)

The University of Illinois at Urbana-Champaign has a vibrant and rapidly evolving entrepreneurial ecosystem, and there are many partners across campus that work together to provide support and resources to the entrepreneurial community. [entrepreneurship.illinois.edu](http://entrepreneurship.illinois.edu)

# UNIVERSITY ENTREPRENEURSHIP 2020

---



ILLINOIS  
INNOVATION  
INDEX