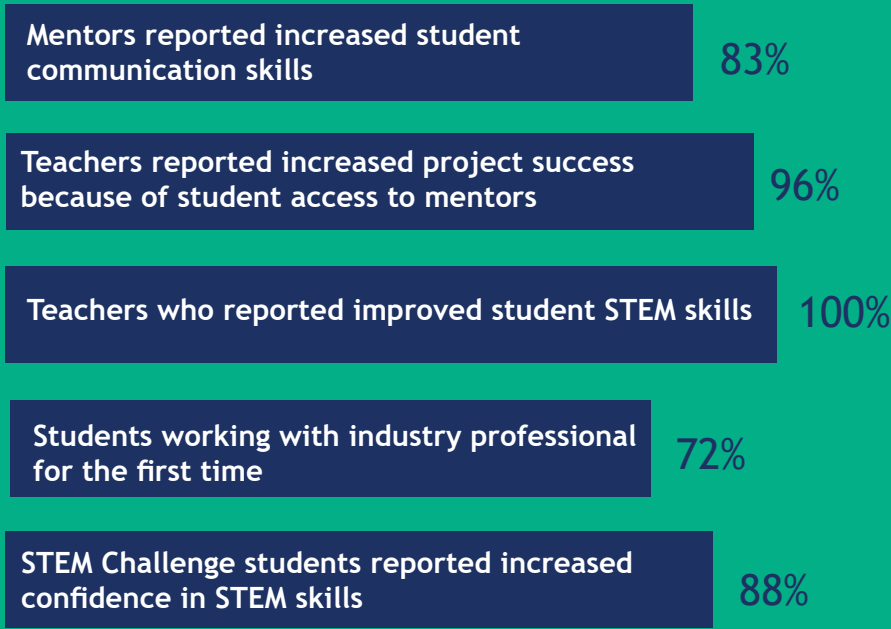


Illinois Science & Technology Institute Program Impact

2019-2020

At a Glance:



Our corporate partners cite communication, collaboration, and problem solving as the most important skills for prospective employees. ISTI's programs center and nourish those skills, showing growth from both the student and teacher perspective.

STUDENTS SAY

they gained confidence and skills in the following:

84% Communication

91% Collaboration

89% Problem solving



TEACHERS SAY

they witnessed growth in skills or confidence in the following:

96% Communication

100% Collaboration

96% Problem solving

Experiment. Fail. Learn. Repeat.

