

**University Technology Park (UTP),** Illinois Institute of Technology (Chicago)

UTP's state-of-the-art facility is currently home to 24 technology-based businesses with more than 380 direct employees.

**SIU Research Park,** Southern Illinois University—Carbondale

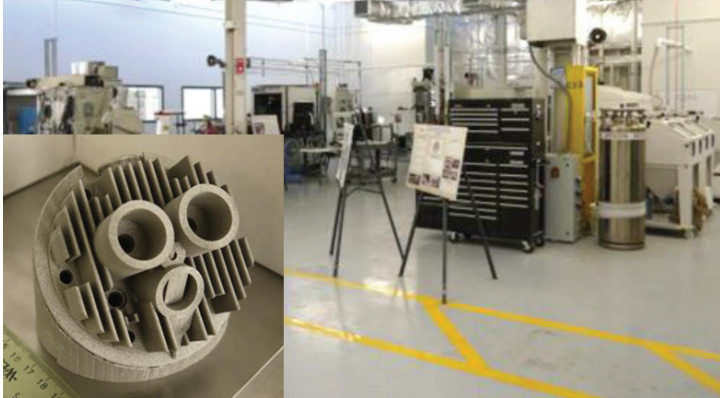
The Carbondale park has started and expanded 40 businesses in the region. Tenants at the park support 390 direct jobs.

**EIGERlab,** Northern Illinois University (Rockford)

EIGERlab has provided accelerator services to more than 150 clients, offering rapid prototyping for industry and startups.

**Quad City Manufacturing Lab,** Western Illinois University (Rock Island)

Serves industry by developing and providing the latest 3D printing solutions.



**Illinois Science & Technology Coalition**

222 Merchandise Mart Plaza, Suite 1212  
Chicago, Illinois 60654

312.239.0350  
info@ISTCoalition.org

[ISTCoalition.org](http://ISTCoalition.org)



ILLINOIS SCIENCE & TECHNOLOGY COALITION FACTSHEET

# State-supported innovation hubs in Illinois

Catalyzing research, investment and economic growth

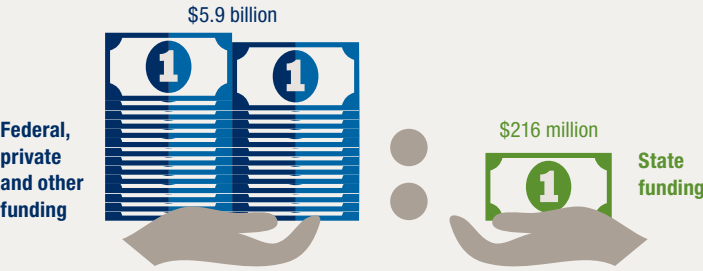
Innovation hubs connect Illinois' world-class research, talent and industry to commercialize new technologies that create economic opportunity and solve important challenges in energy, healthcare, agriculture, manufacturing and other key Illinois industries. Research institutions, entrepreneurs, investors and corporations utilize these spaces to exchange ideas, provide workforce training, build partnerships and launch new technology-based businesses.

State capital support for public-private partnerships and Illinois university-based innovation hubs leverages private and federal investments to strengthen the knowledge-based economy across the state, from Rockford to Carbondale, attracting and retaining top talent and companies.

## Innovation hubs in Illinois: By the numbers

### State funding

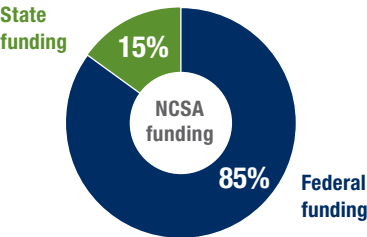
Over the past 15 years, the state of Illinois has invested **\$216 million** to support innovation hubs across the state and leveraged almost **\$5.9 billion** in additional support and investment, a **27:1** return on state investment.



### Economic impact:

#### Federal dollars leveraged

More than **\$3.75 billion** in federal support invested in innovation hub infrastructure, resulting projects and companies.



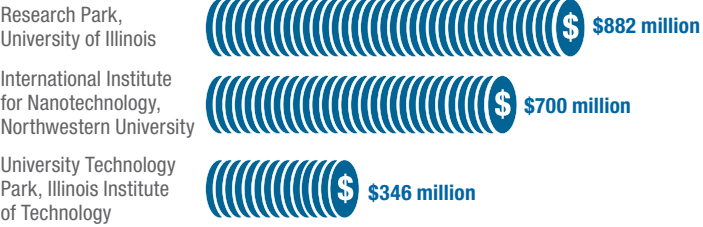
**\$60 million** in state funding to the National Center for Supercomputing Applications (NCSA) has:

- Catalyzed \$360 million in federal funding to expand computing capabilities that have led to innovations such as the first graphical web browser.
- Served as an invaluable resource for companies like Caterpillar and Deere & Company.

#### Private dollars leveraged

More than **\$2.2 billion** invested in hub infrastructure and startup funding for hub-affiliated companies.

#### Top 3 hubs, by private dollars leveraged, \$



#### Companies supported

At least **1,280** companies benefited from services, equipment and infrastructure at innovation hubs throughout Illinois.

Innovation hubs have directly created or retained more than

**6,000** jobs

# State-supported innovation hubs in Illinois

1 Rockford



**EIGERlab, NIU**  
The Northern Illinois University EIGERlab Innovation Network provides an array of services and activities for product development, innovation and business acceleration. **EIGERlab is a critical partner in the region's collaborative work in support of the aerospace cluster, which has created or retained 4,000 jobs in the past five years.**

State support: **\$1 million**

2 DeKalb



**Microelectronics Research and Development Laboratory (MRDL), NIU**  
MRDL provides a comprehensive facility for sensor prototyping and business incubation, offering the only semiconductor research and development facility in Northern Illinois outside of Chicago. **MRDL trains up to 80 undergraduates a year in high-tech manufacturing techniques.**  
State support: **\$8 million**

3 Batavia



**Illinois Accelerator Research Center (IARC), Fermilab**  
The mission of IARC at Fermilab is to use technology developed in the pursuit of science to create the next generation of industrial accelerators and products. **The IARC program will begin in 2015, and within 10 years IARC activity is expected to spur \$250 million in industry growth.**  
State support: **\$20 million**

4 Rock Island



**Quad City Manufacturing Lab (QCML), WIU**  
QCML is a public-private collaborative effort between industry, academia and government to maintain the Quad Cities' innovative competitiveness and ensure the rapid transfer of new developments in science and technology into manufacturing products and processes. **QCML will implement one of the initial demonstration projects by the DMDII consortium.**  
State support: **\$0.6 million**

5 Edwardsville



**University Park, SIU-E**  
University Park's mission is to mobilize the vast intellectual and applied research capabilities of Southern Illinois University—Edwardsville and facilitate interaction with leading-edge research and technology-based businesses to benefit the economic development of the region by attracting new business and investment dollars to the area. **Fifteen companies call University Park home and employ 33 SIU-E graduates.**  
State support: **\$1.5 million**

6 Peoria



**PeoriaNEXT, Bradley University**  
PeoriaNEXT serves as a catalyst in the development of technology-based entrepreneurial businesses, resulting in the diversification of our regional economy and the establishment of an epicenter for the entrepreneurial community. **PeoriaNEXT facilitates hundreds of partnerships per year and supports more than 80 jobs and 16 tenant companies.**  
State support: **\$4.5 million**

7 Carbondale



**SIU Research Park, SIU-C**  
The mission of the Southern Illinois University Research Park is to establish and support an environment to foster innovation within Southern Illinois and throughout the region, commercialize University discoveries and **advance entrepreneurship and economic development.**  
State support: **\$8.5 million**

8 Urbana—Champaign



**University of Illinois Research Park, UIUC**  
Located on the Urbana-Champaign campus, the University of Illinois Research Park is a technology hub for startup companies and corporate research and development operations. **Tenant companies have raised more than \$900 million in angel investment, venture capital and federal funding since the Research Park incubator opened in 2003.**  
State support: **\$11 million**

9 Evanston



**International Institute for Nanotechnology (IIN), Northwestern University**  
IIN catalyzes and supports world-class interdisciplinary nanoscience research that is addressing the world's most pressing problems in medicine, environmental science, telecommunications, information technology, energy, homeland security, food and water safety and transportation. **To date, researchers at IIN have developed 1,800 new products and services commercialized worldwide. Twenty companies have been launched based on technologies developed by IIN researchers.**  
State support: **\$12 million**

10 Skokie



**Illinois Science+Technology Park (ISTP)**  
ISTP, developed by Forest City, is a catalyst to transform Illinois into an economic engine for life science, bioscience and nanoscience technologies. **ISTP currently serves as the Illinois headquarters of four international bioscience companies.**  
State support: **\$5 million**

11 Lemont

**Joint Center for Energy Storage Research (JCESR), Argonne**  
JCESR is a major research partnership that integrates government, academic and industrial researchers from many disciplines to overcome critical scientific and technical barriers and create new breakthrough energy storage technology. **JCESR has been awarded \$120 million over five years by the U.S. DOE to develop the next generation of battery technology.**  
State support: **\$30 million**



**Advanced Photon Source (APS), Argonne**  
The mission of APS is to deliver world-class science and technology by operating an outstanding synchrotron radiation research facility accessible to a broad spectrum of academic and industry researchers conducting research in areas such as biology, energy and materials science. **APS has leveraged more than \$2 billion in federal dollars and \$80 million from non-federal sources.**  
State support: **\$27.6 million**

12 Chicago



**1871**  
1871 is an entrepreneurial hub for digital startups. Located in The Merchandise Mart, this 75,000-square-foot facility provides Chicago startups with programming, access to mentors, educational resources, potential investors and a community of like-minded entrepreneurs that help them on their path to building successful businesses. **1871 companies have raised more than \$70 million in funding.**  
State support: **\$2.3 million**



**Chicago Innovation Exchange (CIE), University of Chicago**  
CIE is a new hub for multi-disciplinary collaborations and support for business startup activities emerging from the University of Chicago, Argonne, Fermilab and Chicago's South Side. **The new center will use a \$20 million Innovation Fund to help scholars and entrepreneurs translate their ideas and new technologies into startup businesses and products.**  
State support: **\$1 million**



**Health, Technology, Innovation Center (HTI), UIC**  
Situating at the intersection of Health, Technology and Innovation, HTI is the first shared laboratory space aimed at supporting early-stage innovators as they validate ideas, convert technology into products and accelerate to venture readiness. **Opened in January 2014 and operated by EnterpriseWorks Chicago, HTI is already working on accelerating the commercialization of publicly funded research at the University of Illinois at Chicago.**  
State support: **\$1.7 million**



**Digital Manufacturing and Design Innovation Institute (DMDII), UI LABS**  
DMDII will be the nation's flagship research institute in digital manufacturing and design innovation and a world-class, first-of-its kind manufacturing hub with the capabilities, innovation and collaboration necessary to transform American manufacturing. **DMDII will leverage at least \$175.8 million in public and private funding.**  
State support: **\$16 million**

**Illinois Manufacturing Lab (IML), UI LABS**  
IML, a collaboration between the University of Illinois and UI LABS, deploys advanced manufacturing technologies to increase manufacturing throughput and quality and **increase the profitability and revenue of small to midsize enterprises.**  
State support: **\$5 million**



**MATTER**  
MATTER is a hub for healthcare technology innovation that brings together entrepreneurs, hospitals, universities, physicians, scientists, investors and industry leaders to launch and grow healthcare IT, medical device, medical diagnostics and biopharma companies. **MATTER opened in February 2015 and currently counts 90 startups as members. The hub has 30 industry partners, 3 universities, and 8 hospitals and health systems working together to accelerate health technology innovation.**  
State support: **\$4 million**



**University Technology Park (UTP), IIT**  
UTP at IIT's mission is to provide a place for companies to grow at virtually every stage of their development by creating an entrepreneurial ecosystem that helps companies thrive and leverage the resources of IIT, state and local governments, private industry, investors and service providers to foster UTP companies' success. **The UTP employs more than 300 people, and affiliated companies have raised \$300 million in venture capital.**  
State support: **\$14 million**



**Chicago Technology Park (CTP), Illinois Medical District Commission**  
Located on 56 acres within the Illinois Medical District (IMD), CTP serves as a vital ground for technology development and growth and **supports multi-institutional biomedical and healthcare innovation initiatives, including the IMD Innovation Alliance and the Chicago Area Patient-Centered Outcomes Research Network (CAPriCORN).**  
State support: **\$3.4 million**